



ELECTRONIC COPY

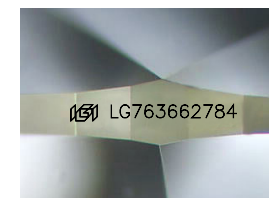
LG763662784
Report verification at igi.org



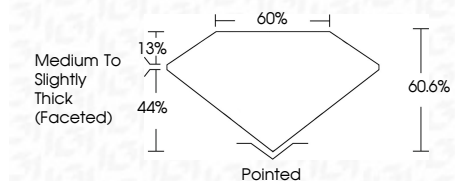
January 3, 2026
IGI Report Number **LG763662784**
Description **LABORATORY GROWN DIAMOND**

Shape and Cutting Style **PEAR BRILLIANT**
Measurements **17.03 X 10.32 X 6.25 MM**

GRADING RESULTS
Carat Weight **6.45 CARATS**
Color Grade **F**
Clarity Grade **VS 1**



Sample Image Used



ADDITIONAL GRADING INFORMATION
Polish **EXCELLENT**
Symmetry **EXCELLENT**
Fluorescence **NONE**
Inscription(s) **IGI LG763662784**
Comments: This Laboratory Grown Diamond was created by Chemical Vapor Deposition (CVD) growth process. Type IIa



January 3, 2026
IGI Report No **LG763662784**
PEAR BRILLIANT
17.03 X 10.32 X 6.25 MM
6.45 CARATS
F
VS 1
60.6%
44%
13%
Medium to Slightly Thick (Faceted)
Pointed
EXCELLENT
EXCELLENT
NONE
IGI LG763662784
Comments: This Laboratory Grown Diamond was created by Chemical Vapor Deposition (CVD) growth process. Type IIa

LABORATORY GROWN DIAMOND REPORT

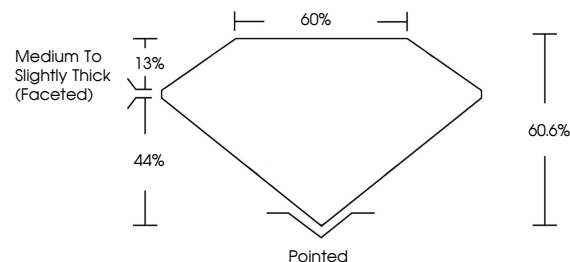
January 3, 2026
IGI Report Number **LG763662784**
Description **LABORATORY GROWN DIAMOND**
Shape and Cutting Style **PEAR BRILLIANT**
Measurements **17.03 X 10.32 X 6.25 MM**

GRADING RESULTS
Carat Weight **6.45 CARATS**
Color Grade **F**
Clarity Grade **VS 1**

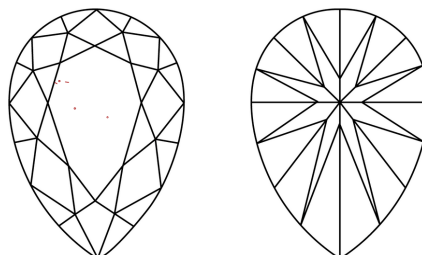
ADDITIONAL GRADING INFORMATION
Polish **EXCELLENT**
Symmetry **EXCELLENT**
Fluorescence **NONE**
Inscription(s) **IGI LG763662784**

Comments: This Laboratory Grown Diamond was created by Chemical Vapor Deposition (CVD) growth process. Type IIa

PROPORTIONS



CLARITY CHARACTERISTICS



KEY TO SYMBOLS

Red symbols indicate internal characteristics.
Green symbols indicate external characteristics.

COLOR

D E F G H I J Faint Very Light Light

CLARITY

FL	IF	VS ¹⁻²	VS ¹⁻²	SI ¹⁻²	I ¹⁻³
Flawless	Internally Flawless	Very Very Slightly Included	Very Slightly Included	Slightly Included	Included

