



ELECTRONIC COPY

LABORATORY GROWN DIAMOND REPORT

LG763660624
Report verification at igi.org

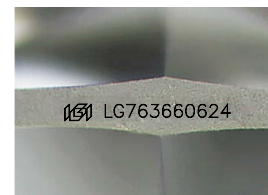
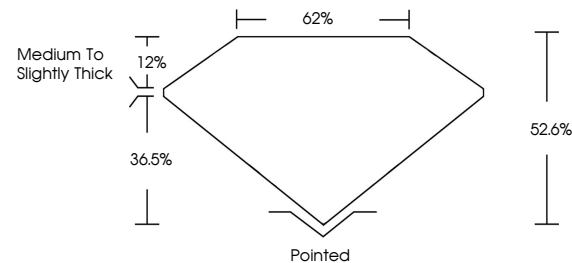
January 17, 2026	
IGI Report Number	LG763660624
Description	LABORATORY GROWN DIAMOND
Shape and Cutting Style	LOZENGE STEP CUT
Measurements	13.57 X 7.63 X 4.01 MM
GRADING RESULTS	
Carat Weight	2.10 CARATS
Color Grade	E
Clarity Grade	VS 1

ADDITIONAL GRADING INFORMATION

Polish	EXCELLENT
Symmetry	EXCELLENT
Fluorescence	NONE
Inscription(s)	151 LG763660624

Comments: This Laboratory Grown Diamond was created by Chemical Vapor Deposition (CVD) growth process.
Type IIa

PROPORTIONS



Sample Image Used

COLOR

D E F G H I J Faint Very Light Light

CLARITY

FL	IF	VVS ¹⁻²	VS ¹⁻²	SI ¹⁻²	I ¹⁻³
Flawless	Internally Flawless	Very Very Slightly Included	Very Slightly Included	Slightly Included	Included

LABORATORY GROWN DIAMOND REPORT



January 17, 2026	
IGI Report Number	LG763660624
Description	LABORATORY GROWN DIAMOND
Shape and Cutting Style	LOZENGE STEP CUT
Measurements	13.57 X 7.63 X 4.01 MM
GRADING RESULTS	
Carat Weight	2.10 CARATS
Color Grade	E
Clarity Grade	VS 1

ADDITIONAL GRADING INFORMATION

Polish	EXCELLENT
Symmetry	EXCELLENT
Fluorescence	NONE
Inscription(s)	 LG763660624
<p>Comments: This Laboratory Grown Diamond was created by Chemical Vapor Deposition (CVD) growth process.</p> <p>Type IIa</p>	



© IGI 2020, International Gemological Institute

FD - 10 20



THIS DOCUMENT WAS PRODUCED WITH THE FOLLOWING SECURITY MEASURES: SPECIAL DOCUMENT PAPER, INK SCREENS, WATERMARK, BACKGROUND DESIGNS, HOLOGRAM AND OTHER SECURITY FEATURES NOT LISTED AND DO EXCEED DOCUMENT SECURITY INDUSTRY GUIDELINES

www.igi.org

January 17, 2026
GI Report No LG766
OZENGE STEP CUT

13.57 X 7.63 X 4.01 MM	Carat Weight	2.10 CARATS
	Color Grade	E
	Clarity Grade	VS 1
	Depth	82.6%
	Table	62%
	Grade	Medium To Slightly Thick
	Culet	Pointed
	Polish	EXCELLENT
	Symmetry	EXCELLENT
	Fluorescence	NONE
	Inscriptions(s)	see 1275949024

Comments:
This Laboratory Grown Diamond was created by Chemical Vapor Deposition (CVD) growth process.