



ELECTRONIC COPY

LG763660133
Report verification at igi.org



January 16, 2026
IGI Report Number **LG763660133**
Description **LABORATORY GROWN DIAMOND**
Shape and Cutting Style **CUSHION MODIFIED BRILLIANT**
Measurements **16.39 X 10.75 X 6.47 MM**
GRADING RESULTS
Carat Weight **10.30 CARATS**
Color Grade **FANCY PINKISH BROWN**
Clarity Grade **VS 2**

LABORATORY GROWN DIAMOND REPORT

January 16, 2026
IGI Report Number **LG763660133**
Description **LABORATORY GROWN DIAMOND**
Shape and Cutting Style **CUSHION MODIFIED BRILLIANT**
Measurements **16.39 X 10.75 X 6.47 MM**

GRADING RESULTS

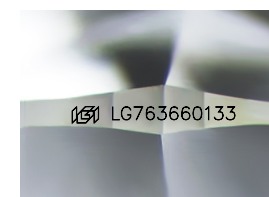
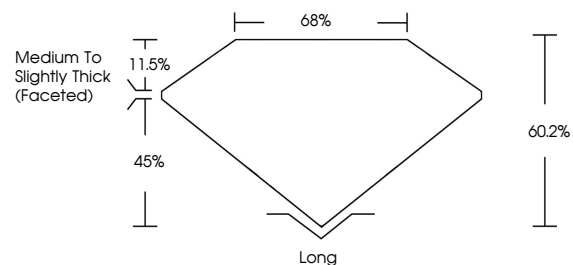
Carat Weight **10.30 CARATS**
Color Grade **FANCY PINKISH BROWN**
Clarity Grade **VS 2**

ADDITIONAL GRADING INFORMATION

Polish **EXCELLENT**
Symmetry **EXCELLENT**
Fluorescence **SLIGHT**
Inscription(s) **LG763660133**

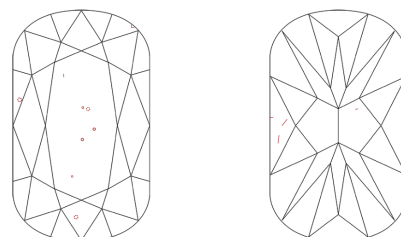
Comments: This Laboratory Grown Diamond was created by Chemical Vapor Deposition (CVD) growth process.
Indications of post-growth treatment.

PROPORTIONS



Sample Image Used

CLARITY CHARACTERISTICS



KEY TO SYMBOLS

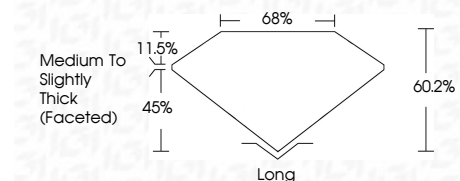
Red symbols indicate internal characteristics.
Green symbols indicate external characteristics.

COLOR

D E F G H I J Faint Very Light Light

CLARITY

FL	IF	VS ¹⁻²	VS ¹⁻²	SI ¹⁻²	I ¹⁻³
Flawless	Internally Flawless	Very Very Slightly Included	Very Slightly Included	Slightly Included	Included



ADDITIONAL GRADING INFORMATION

Polish **EXCELLENT**
Symmetry **EXCELLENT**
Fluorescence **SLIGHT**
Inscription(s) **LG763660133**
Comments: This Laboratory Grown Diamond was created by Chemical Vapor Deposition (CVD) growth process.
Indications of post-growth treatment.



January 16, 2026
IGI Report No LG763660133
CUSHION MODIFIED BRILLIANT

10.30 CARATS
Carat Weight
FANCY PINKISH BROWN
Color Grade
VS 2
Clarity Grade
16.39 X 10.75 X 6.47 MM
Depth
60.2%
68%
Table
11.5%
Medium to Slightly Thick (Faceted)
Grades

Long
Culet
EXCELLENT
Symmetry
EXCELLENT
Fluorescence
SLIGHT
Inscription(s)
 LG763660133

Comments: This Laboratory Grown Diamond was created by Chemical Vapor Deposition (CVD) growth process.
Indications of post-growth treatment.