



ELECTRONIC COPY

LG763660129
Report verification at igi.org



February 26, 2026
IGI Report Number **LG763660129**
Description **LABORATORY GROWN DIAMOND**
Shape and Cutting Style **FACETED DISK**
Measurements **13.13 X 13.19 X 5.30 MM**
GRADING RESULTS
Carat Weight **6.08 CARATS**
Color Grade **FANCY PINK**
Clarity Grade **VS 1**

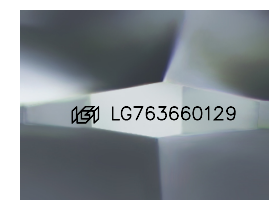
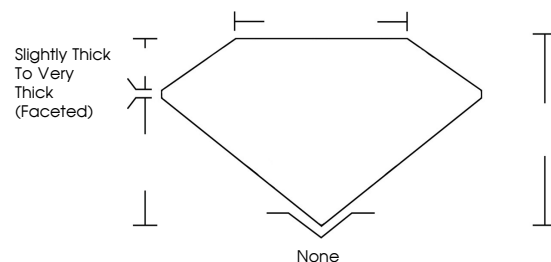
February 26, 2026
IGI Report Number **LG763660129**
Description **LABORATORY GROWN DIAMOND**
Shape and Cutting Style **FACETED DISK**
Measurements **13.13 X 13.19 X 5.30 MM**

GRADING RESULTS
Carat Weight **6.08 CARATS**
Color Grade **FANCY PINK**
Clarity Grade **VS 1**

ADDITIONAL GRADING INFORMATION
Polish **EXCELLENT**
Symmetry **EXCELLENT**
Fluorescence **SLIGHT**
Inscription(s) **IGI LG763660129**

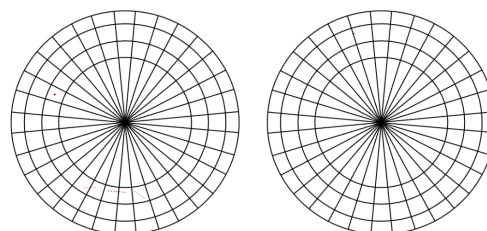
Comments: This Laboratory Grown Diamond was created by Chemical Vapor Deposition (CVD) growth process. Indications of post-growth treatment.

PROPORTIONS



Sample Image Used

CLARITY CHARACTERISTICS



KEY TO SYMBOLS

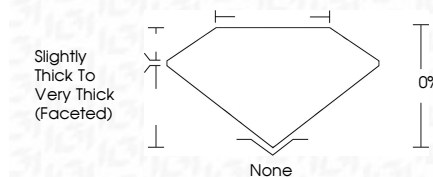
Red symbols indicate internal characteristics.
Green symbols indicate external characteristics.

COLOR

D E F G H I J Faint Very Light Light

CLARITY

FL	IF	VS ¹⁻²	VS ¹⁻²	SI ¹⁻²	I ¹⁻³
Flawless	Internally Flawless	Very Very Slightly Included	Very Slightly Included	Slightly Included	Included



ADDITIONAL GRADING INFORMATION

Polish **EXCELLENT**
Symmetry **EXCELLENT**
Fluorescence **SLIGHT**
Inscription(s) **IGI LG763660129**
Comments: This Laboratory Grown Diamond was created by Chemical Vapor Deposition (CVD) growth process. Indications of post-growth treatment.



February 26, 2026
IGI Report No **LG763660129**
FACETED DISK
13.13 X 13.19 X 5.30 MM
Carat Weight **6.08 CARATS**
Color Grade **FANCY PINK**
Clarity Grade **VS 1**
Depth **0%**
Table **0%**
Girdle **Slightly Thick To Very Thick (Faceted)**
Culet **None**
Polish **EXCELLENT**
Symmetry **EXCELLENT**
Fluorescence **SLIGHT**
Inscription(s) **IGI LG763660129**
Comments: This Laboratory Grown Diamond was created by Chemical Vapor Deposition (CVD) growth process. Indications of post-growth treatment.