



ELECTRONIC COPY

LG763660064
Report verification at igi.org



January 16, 2026
IGI Report Number **LG763660064**
Description **LABORATORY GROWN DIAMOND**
Shape and Cutting Style **MARQUISE MODIFIED BRILLIANT**
Measurements **21.38 X 10.66 X 6.20 MM**
GRADING RESULTS
Carat Weight **10.12 CARATS**
Color Grade **FANCY VIVID BROWNISH PINK**
Clarity Grade **SI 2**

January 16, 2026
IGI Report Number **LG763660064**
Description **LABORATORY GROWN DIAMOND**
Shape and Cutting Style **MARQUISE MODIFIED BRILLIANT**
Measurements **21.38 X 10.66 X 6.20 MM**

GRADING RESULTS

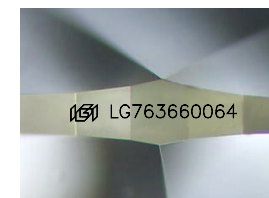
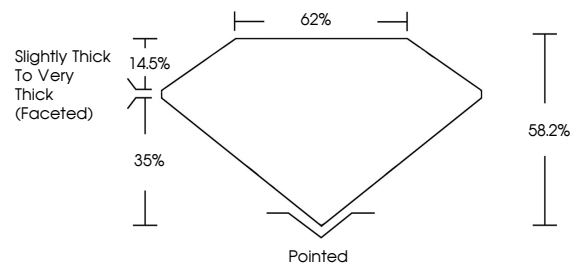
Carat Weight **10.12 CARATS**
Color Grade **FANCY VIVID BROWNISH PINK**
Clarity Grade **SI 2**

ADDITIONAL GRADING INFORMATION

Polish **EXCELLENT**
Symmetry **EXCELLENT**
Fluorescence **SLIGHT**
Inscription(s) **LG763660064**

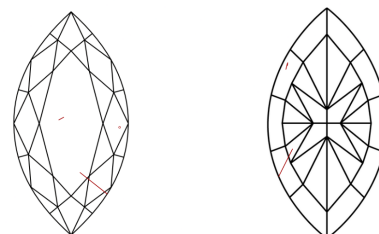
Comments: This Laboratory Grown Diamond was created by Chemical Vapor Deposition (CVD) growth process.
Indications of post-growth treatment.

PROPORTIONS



Sample Image Used

CLARITY CHARACTERISTICS



KEY TO SYMBOLS

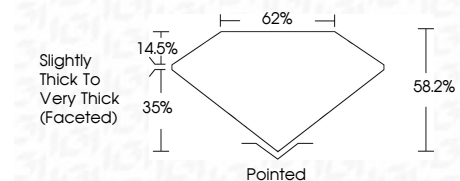
Red symbols indicate internal characteristics.
Green symbols indicate external characteristics.

COLOR

D E F G H I J Faint Very Light Light

CLARITY

FL	IF	VS ¹⁻²	VS ¹⁻²	SI ¹⁻²	I ¹⁻³
Flawless	Internally Flawless	Very Very Slightly Included	Very Slightly Included	Slightly Included	Included



ADDITIONAL GRADING INFORMATION

Polish **EXCELLENT**
Symmetry **EXCELLENT**
Fluorescence **SLIGHT**
Inscription(s) **LG763660064**
Comments: This Laboratory Grown Diamond was created by Chemical Vapor Deposition (CVD) growth process.
Indications of post-growth treatment.



IGI



January 16, 2026
IGI Report No **LG763660064**
MARQUISE MODIFIED BRILLIANT
21.38 X 10.66 X 6.20 MM
Carat Weight **10.12 CARATS**
Color Grade **FANCY VIVID BROWNISH PINK**
Clarity Grade **SI 2**
Depth **35%**
Table **14.5%**
Girdle **Slightly Thick To Very Thick (Faceted)**
Culet **Pointed**
Polish **EXCELLENT**
Symmetry **EXCELLENT**
Fluorescence **SLIGHT**
Inscription(s) **LG763660064**
Comments: This Laboratory Grown Diamond was created by Chemical Vapor Deposition (CVD) growth process.
Indications of post-growth treatment.