



ELECTRONIC COPY

LG763660047
Report verification at igi.org



January 16, 2026
IGI Report Number **LG763660047**
Description **LABORATORY GROWN DIAMOND**
Shape and Cutting Style **CUSHION MODIFIED BRILLIANT**
Measurements **10.91 X 8.89 X 5.80 MM**
GRADING RESULTS
Carat Weight **5.04 CARATS**
Color Grade **FANCY DEEP BROWNISH PINK**
Clarity Grade **VS 1**

January 16, 2026
IGI Report Number **LG763660047**
Description **LABORATORY GROWN DIAMOND**
Shape and Cutting Style **CUSHION MODIFIED BRILLIANT**
Measurements **10.91 X 8.89 X 5.80 MM**

GRADING RESULTS

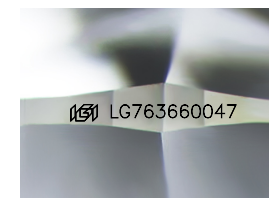
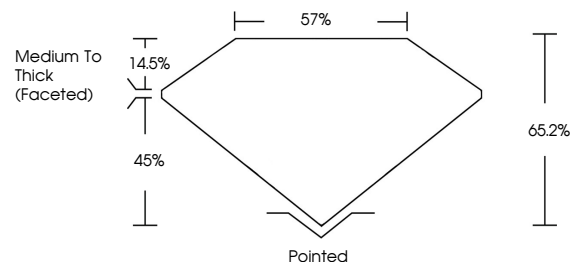
Carat Weight **5.04 CARATS**
Color Grade **FANCY DEEP BROWNISH PINK**
Clarity Grade **VS 1**

ADDITIONAL GRADING INFORMATION

Polish **EXCELLENT**
Symmetry **EXCELLENT**
Fluorescence **VERY SLIGHT**
Inscription(s) **IGI LG763660047**

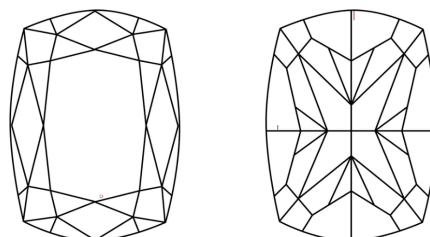
Comments: This Laboratory Grown Diamond was created by Chemical Vapor Deposition (CVD) growth process.
Indications of post-growth treatment.

PROPORTIONS



Sample Image Used

CLARITY CHARACTERISTICS



KEY TO SYMBOLS

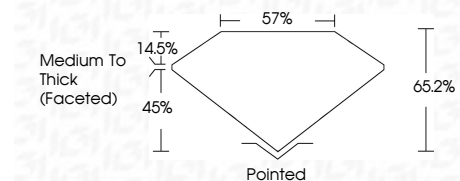
Red symbols indicate internal characteristics.
Green symbols indicate external characteristics.

COLOR

D E F G H I J Faint Very Light Light

CLARITY

FL	IF	VS ¹⁻²	VS ¹⁻²	SI ¹⁻²	I ¹⁻³
Flawless	Internally Flawless	Very Very Slightly Included	Very Slightly Included	Slightly Included	Included



ADDITIONAL GRADING INFORMATION

Polish **EXCELLENT**
Symmetry **EXCELLENT**
Fluorescence **VERY SLIGHT**
Inscription(s) **IGI LG763660047**
Comments: This Laboratory Grown Diamond was created by Chemical Vapor Deposition (CVD) growth process.
Indications of post-growth treatment.



IGI



January 16, 2026
IGI Report No LG763660047
CUSHION MODIFIED BRILLIANT

5.04 CARATS
Carat Weight
Color Grade FANCY DEEP BROWNISH PINK
Clarity Grade VS 1
Table 57%
Depth 45.2%
Girdle 65.2%
Culet Medium To Thick (Faceted)
Pointed
Polish EXCELLENT
Symmetry EXCELLENT
Fluorescence VERY SLIGHT
Inscription(s) IGI LG763660047

Comments: This Laboratory Grown Diamond was created by Chemical Vapor Deposition (CVD) growth process.
Indications of post-growth treatment.