



ELECTRONIC COPY

LG763660040
Report verification at igi.org



January 15, 2026
IGI Report Number **LG763660040**
Description **LABORATORY GROWN DIAMOND**
Shape and Cutting Style **PRINCESS CUT**
Measurements **7.61 X 7.38 X 5.65 MM**
GRADING RESULTS
Carat Weight **3.04 CARATS**
Color Grade **FANCY VIVID BROWNISH PINK**
Clarity Grade **VS 2**

LABORATORY GROWN DIAMOND REPORT

January 15, 2026
IGI Report Number **LG763660040**
Description **LABORATORY GROWN DIAMOND**
Shape and Cutting Style **PRINCESS CUT**
Measurements **7.61 X 7.38 X 5.65 MM**

GRADING RESULTS

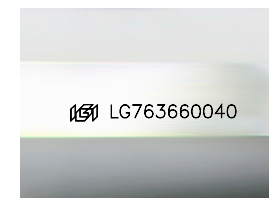
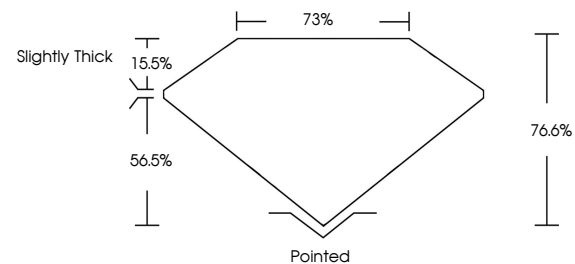
Carat Weight **3.04 CARATS**
Color Grade **FANCY VIVID BROWNISH PINK**
Clarity Grade **VS 2**

ADDITIONAL GRADING INFORMATION

Polish **EXCELLENT**
Symmetry **EXCELLENT**
Fluorescence **SLIGHT**
Inscription(s) **IGI LG763660040**

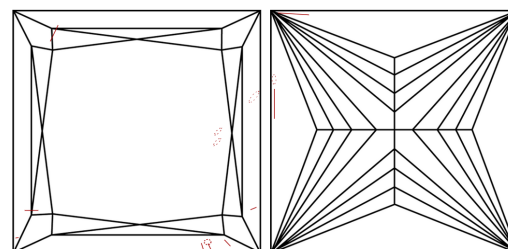
Comments: This Laboratory Grown Diamond was created by Chemical Vapor Deposition (CVD) growth process.
Indications of post-growth treatment.

PROPORTIONS



Sample Image Used

CLARITY CHARACTERISTICS



KEY TO SYMBOLS

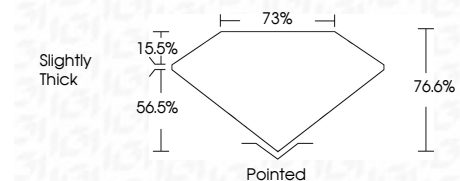
Red symbols indicate internal characteristics.
Green symbols indicate external characteristics.

COLOR

D E F G H I J Faint Very Light Light

CLARITY

FL	IF	VS ¹⁻²	VS ¹⁻²	SI ¹⁻²	I ¹⁻³
Flawless	Internally Flawless	Very Very Slightly Included	Very Slightly Included	Slightly Included	Included



ADDITIONAL GRADING INFORMATION

Polish **EXCELLENT**
Symmetry **EXCELLENT**
Fluorescence **SLIGHT**
Inscription(s) **IGI LG763660040**
Comments: This Laboratory Grown Diamond was created by Chemical Vapor Deposition (CVD) growth process.
Indications of post-growth treatment.



IGI



January 15, 2026
IGI Report No. **LG763660040**
PRINCESS CUT
3.04 CARATS
Carat Weight
FANCY VIVID BROWNISH PINK
Color Grade
VS 2
Clarity Grade
76.6%
Table
73%
Depth
Slightly Thick
Pointed
EXCELLENT
Culet
EXCELLENT
Polish
EXCELLENT
Symmetry
SLIGHT
Fluorescence
IGI LG763660040
Inscription(s)

Comments: This Laboratory Grown Diamond was created by Chemical Vapor Deposition (CVD) growth process.
Indications of post-growth treatment.