



ELECTRONIC COPY

LG763660017
Report verification at igi.org



January 15, 2026
IGI Report Number **LG763660017**
Description **LABORATORY GROWN DIAMOND**
Shape and Cutting Style **CUT CORNERED
RECTANGULAR MODIFIED
BRILLIANT**
Measurements **10.16 X 7.03 X 4.68 MM**
GRADING RESULTS
Carat Weight **3.08 CARATS**
Color Grade **FANCY VIVID BROWNISH
PINK**
Clarity Grade **VS 1**

LABORATORY GROWN DIAMOND REPORT

January 15, 2026
IGI Report Number **LG763660017**
Description **LABORATORY GROWN DIAMOND**
Shape and Cutting Style **CUT CORNERED RECTANGULAR
MODIFIED BRILLIANT**
Measurements **10.16 X 7.03 X 4.68 MM**

GRADING RESULTS

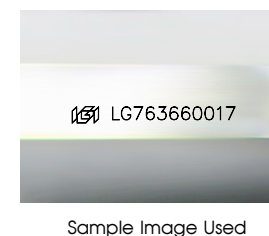
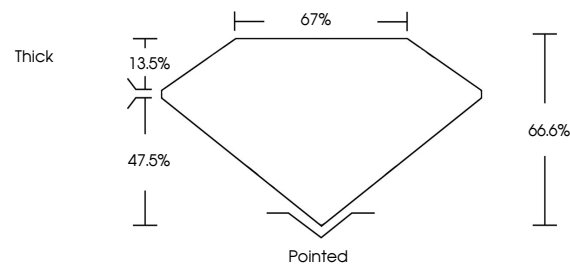
Carat Weight **3.08 CARATS**
Color Grade **FANCY VIVID BROWNISH PINK**
Clarity Grade **VS 1**

ADDITIONAL GRADING INFORMATION

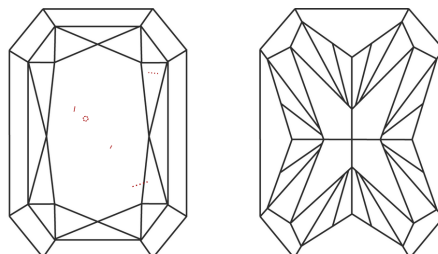
Polish **EXCELLENT**
Symmetry **EXCELLENT**
Fluorescence **SLIGHT**
Inscription(s) **IGI LG763660017**

Comments: This Laboratory Grown Diamond was created by Chemical Vapor Deposition (CVD) growth process. Indications of post-growth treatment.

PROPORTIONS



CLARITY CHARACTERISTICS



KEY TO SYMBOLS

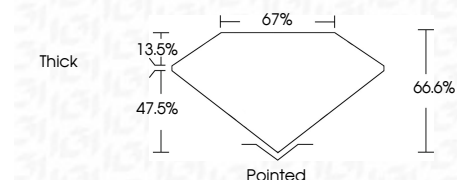
Red symbols indicate internal characteristics.
Green symbols indicate external characteristics.

COLOR

D E F G H I J Faint Very Light Light

CLARITY

FL	IF	VS ¹⁻²	VS ¹⁻²	SI ¹⁻²	I ¹⁻³
Flawless	Internally Flawless	Very Very Slightly Included	Very Slightly Included	Slightly Included	Included



ADDITIONAL GRADING INFORMATION

Polish **EXCELLENT**
Symmetry **EXCELLENT**
Fluorescence **SLIGHT**
Inscription(s) **IGI LG763660017**
Comments: This Laboratory Grown Diamond was created by Chemical Vapor Deposition (CVD) growth process. Indications of post-growth treatment.



January 15, 2026
IGI Report No **LG763660017**
CUT CORNERED RECT. MODIFIED BRILLIANT
3.08 CARATS
FANCY VIVID BROWNISH PINK
VS 1
66.6%
67%
Thick
Pointed
EXCELLENT
EXCELLENT
SLIGHT
IGI LG763660017
Comments: This Laboratory Grown Diamond was created by Chemical Vapor Deposition (CVD) growth process. Indications of post-growth treatment.