



ELECTRONIC COPY

LG763660003
Report verification at igi.org



January 15, 2026
IGI Report Number **LG763660003**
Description **LABORATORY GROWN DIAMOND**
Shape and Cutting Style **PRINCESS CUT**
Measurements **10.61 X 10.26 X 7.01 MM**
GRADING RESULTS
Carat Weight **7.03 CARATS**
Color Grade **FANCY VIVID BROWNISH PINK**
Clarity Grade **VS 1**

LABORATORY GROWN DIAMOND REPORT

January 15, 2026
IGI Report Number **LG763660003**
Description **LABORATORY GROWN DIAMOND**
Shape and Cutting Style **PRINCESS CUT**
Measurements **10.61 X 10.26 X 7.01 MM**

GRADING RESULTS

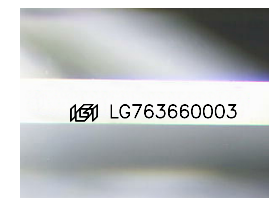
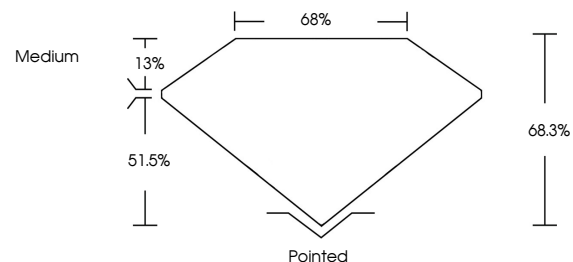
Carat Weight **7.03 CARATS**
Color Grade **FANCY VIVID BROWNISH PINK**
Clarity Grade **VS 1**

ADDITIONAL GRADING INFORMATION

Polish **EXCELLENT**
Symmetry **EXCELLENT**
Fluorescence **SLIGHT**
Inscription(s) **LG763660003**

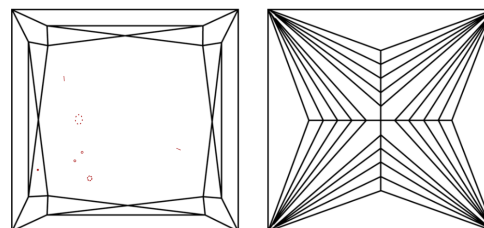
Comments: This Laboratory Grown Diamond was created by Chemical Vapor Deposition (CVD) growth process.
Indications of post-growth treatment.

PROPORTIONS



Sample Image Used

CLARITY CHARACTERISTICS



KEY TO SYMBOLS

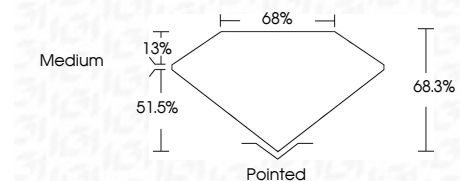
Red symbols indicate internal characteristics.
Green symbols indicate external characteristics.

COLOR

D E F G H I J Faint Very Light Light

CLARITY

FL	IF	VS ¹⁻²	VS ¹⁻²	SI ¹⁻²	I ¹⁻³
Flawless	Internally Flawless	Very Very Slightly Included	Very Slightly Included	Slightly Included	Included



ADDITIONAL GRADING INFORMATION

Polish **EXCELLENT**
Symmetry **EXCELLENT**
Fluorescence **SLIGHT**
Inscription(s) **LG763660003**
Comments: This Laboratory Grown Diamond was created by Chemical Vapor Deposition (CVD) growth process.
Indications of post-growth treatment.



January 15, 2026
IGI Report No. **LG763660003**
PRINCESS CUT
7.03 CARATS
Carat Weight
FANCY VIVID BROWNISH PINK
Color Grade
VS 1
Clarity Grade
68.3%
Table
65%
Depth
Medium
Girdle
Pointed
Culet
EXCELLENT
Polish
EXCELLENT
Symmetry
SLIGHT
Fluorescence
SLIGHT
Inscription(s)
 LG763660003
Comments: This Laboratory Grown Diamond was created by Chemical Vapor Deposition (CVD) growth process.
Indications of post-growth treatment.