



ELECTRONIC COPY

LG763659979
Report verification at igi.org



January 18, 2026
IGI Report Number **LG763659979**
Description **LABORATORY GROWN DIAMOND**
Shape and Cutting Style **CUT CORNERED
RECTANGULAR MODIFIED
BRILLIANT**
Measurements **13.83 X 9.67 X 6.60 MM**
GRADING RESULTS
Carat Weight **8.31 CARATS**
Color Grade **FANCY VIVID ORANGY PINK**
Clarity Grade **SI 1**

LABORATORY GROWN DIAMOND REPORT

January 18, 2026
IGI Report Number **LG763659979**
Description **LABORATORY GROWN DIAMOND**
Shape and Cutting Style **CUT CORNERED RECTANGULAR
MODIFIED BRILLIANT**
Measurements **13.83 X 9.67 X 6.60 MM**

GRADING RESULTS

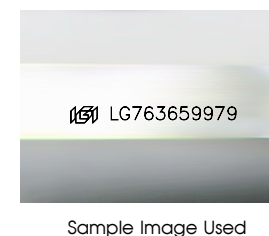
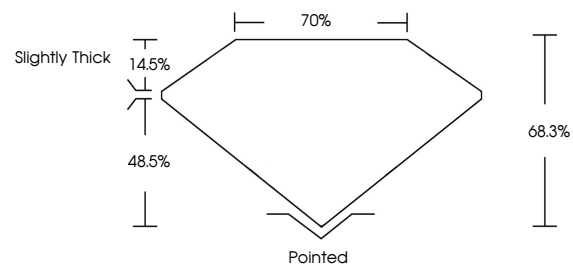
Carat Weight **8.31 CARATS**
Color Grade **FANCY VIVID ORANGY PINK**
Clarity Grade **SI 1**

ADDITIONAL GRADING INFORMATION

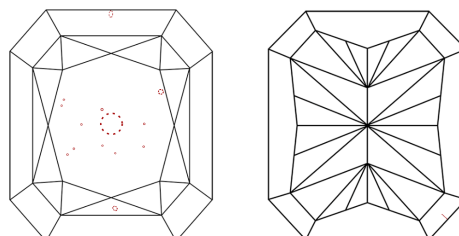
Polish **EXCELLENT**
Symmetry **EXCELLENT**
Fluorescence **SLIGHT**
Inscription(s) **IGI LG763659979**

Comments: This Laboratory Grown Diamond was created by Chemical Vapor Deposition (CVD) growth process. Indications of post-growth treatment.

PROPORTIONS



CLARITY CHARACTERISTICS



KEY TO SYMBOLS

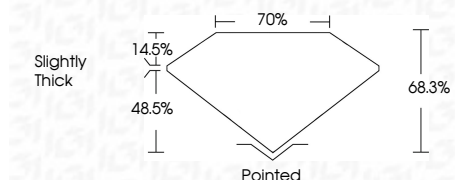
Red symbols indicate internal characteristics.
Green symbols indicate external characteristics.

COLOR

D E F G H I J Faint Very Light Light

CLARITY

FL	IF	VS ¹⁻²	VS ¹⁻²	SI ¹⁻²	I ¹⁻³
Flawless	Internally Flawless	Very Very Slightly Included	Very Slightly Included	Slightly Included	Included



ADDITIONAL GRADING INFORMATION

Polish **EXCELLENT**
Symmetry **EXCELLENT**
Fluorescence **SLIGHT**
Inscription(s) **IGI LG763659979**
Comments: This Laboratory Grown Diamond was created by Chemical Vapor Deposition (CVD) growth process. Indications of post-growth treatment.



January 18, 2026
IGI Report No **LG763659979**
CUT CORNERED RECT. MODIFIED BRILLIANT
13.83 X 9.67 X 6.60 MM
Carat Weight **8.31 CARATS**
Color Grade **FANCY VIVID ORANGY PINK**
Clarity Grade **SI 1**
Depth **68.3%**
Table **70%**
Girdle **Slightly Thick**
Culet **Pointed**
Polish **EXCELLENT**
Symmetry **EXCELLENT**
Fluorescence **SLIGHT**
Inscription(s) **IGI LG763659979**
Comments: This Laboratory Grown Diamond was created by Chemical Vapor Deposition (CVD) growth process. Indications of post-growth treatment.