



ELECTRONIC COPY

LG763659949
Report verification at igi.org



January 15, 2026
IGI Report Number **LG763659949**
Description **LABORATORY GROWN DIAMOND**
Shape and Cutting Style **CUT CORNERED
RECTANGULAR MODIFIED
BRILLIANT**
Measurements **9.01 X 6.88 X 4.69 MM**
GRADING RESULTS
Carat Weight **3.01 CARATS**
Color Grade **FANCY PINKISH BROWN**
Clarity Grade **VS 1**

LABORATORY GROWN DIAMOND REPORT

January 15, 2026
IGI Report Number **LG763659949**
Description **LABORATORY GROWN DIAMOND**
Shape and Cutting Style **CUT CORNERED RECTANGULAR
MODIFIED BRILLIANT**
Measurements **9.01 X 6.88 X 4.69 MM**

GRADING RESULTS

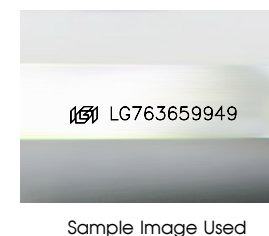
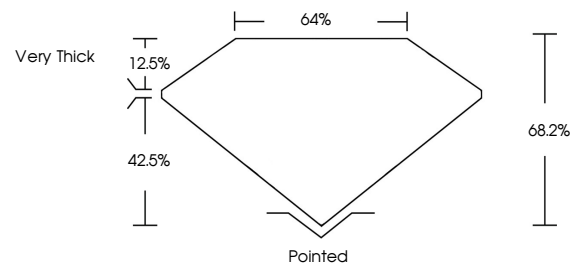
Carat Weight **3.01 CARATS**
Color Grade **FANCY PINKISH BROWN**
Clarity Grade **VS 1**

ADDITIONAL GRADING INFORMATION

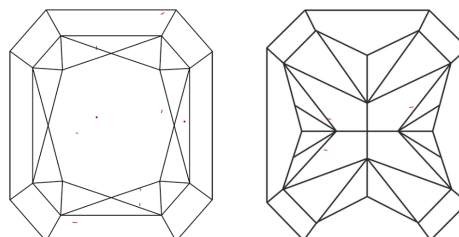
Polish **EXCELLENT**
Symmetry **VERY GOOD**
Fluorescence **SLIGHT**
Inscription(s) **IGI LG763659949**

Comments: This Laboratory Grown Diamond was created by Chemical Vapor Deposition (CVD) growth process. Indications of post-growth treatment.

PROPORTIONS



CLARITY CHARACTERISTICS



KEY TO SYMBOLS

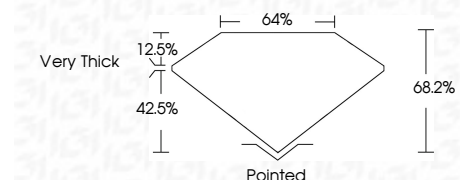
Red symbols indicate internal characteristics.
Green symbols indicate external characteristics.

COLOR

D E F G H I J Faint Very Light Light

CLARITY

FL	IF	VS ¹⁻²	VS ¹⁻²	SI ¹⁻²	I ¹⁻³
Flawless	Internally Flawless	Very Very Slightly Included	Very Slightly Included	Slightly Included	Included



ADDITIONAL GRADING INFORMATION

Polish **EXCELLENT**
Symmetry **VERY GOOD**
Fluorescence **SLIGHT**
Inscription(s) **IGI LG763659949**
Comments: This Laboratory Grown Diamond was created by Chemical Vapor Deposition (CVD) growth process. Indications of post-growth treatment.



January 15, 2026
IGI Report No LG763659949
CUT CORNERED RECT. MODIFIED BRILLIANT
9.01 X 6.88 X 4.69 MM
3.01 CARATS
FANCY PINKISH BROWN
VS 1
68.2%
42.5%
12.5%
Very Thick
Pointed
EXCELLENT
VERY GOOD
SLIGHT
IGI LG763659949

Comments: This Laboratory Grown Diamond was created by Chemical Vapor Deposition (CVD) growth process. Indications of post-growth treatment.