



**ELECTRONIC COPY**

LG763659873  
Report verification at igi.org



January 15, 2026

IGI Report Number **LG763659873**

Description **LABORATORY GROWN DIAMOND**

Shape and Cutting Style **ROUND BRILLIANT**

Measurements **6.73 - 6.75 X 4.13 MM**

**GRADING RESULTS**

Carat Weight **1.17 CARAT**

Color Grade **LIGHT BROWNISH PINK**

Clarity Grade **VS 2**

Cut Grade **IDEAL**

January 15, 2026  
IGI Report Number **LG763659873**  
Description **LABORATORY GROWN DIAMOND**  
Shape and Cutting Style **ROUND BRILLIANT**  
Measurements **6.73 - 6.75 X 4.13 MM**

**GRADING RESULTS**

Carat Weight **1.17 CARAT**

Color Grade **LIGHT BROWNISH PINK**

Clarity Grade **VS 2**

Cut Grade **IDEAL**

**ADDITIONAL GRADING INFORMATION**

Polish **EXCELLENT**

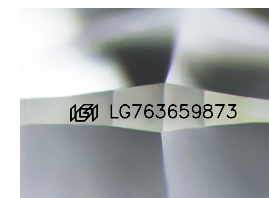
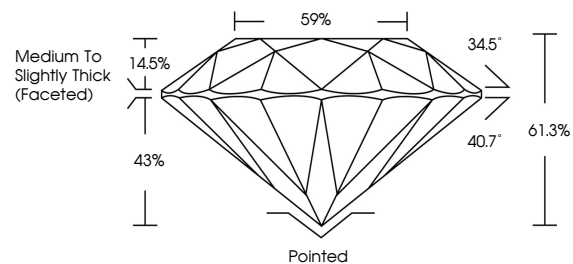
Symmetry **EXCELLENT**

Fluorescence **SLIGHT**

Inscription(s) **LG763659873**

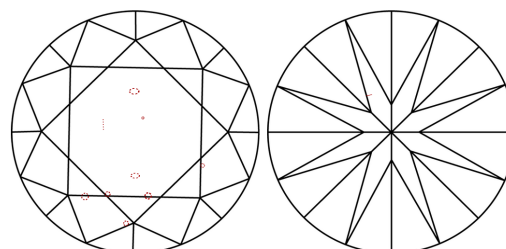
Comments: This Laboratory Grown Diamond was created by Chemical Vapor Deposition (CVD) growth process.  
Indications of post-growth treatment.

**PROPORTIONS**



Sample Image Used

**CLARITY CHARACTERISTICS**



**KEY TO SYMBOLS**

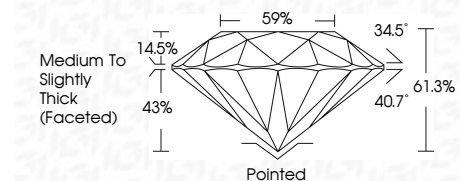
Red symbols indicate internal characteristics.  
Green symbols indicate external characteristics.

**COLOR**

D E F G H I J Faint Very Light Light

**CLARITY**

FL	IF	VS <sup>1-2</sup>	VS <sup>1-2</sup>	SI <sup>1-2</sup>	I <sup>1-3</sup>
Flawless	Internally Flawless	Very Very Slightly Included	Very Slightly Included	Slightly Included	Included



**ADDITIONAL GRADING INFORMATION**

Polish **EXCELLENT**

Symmetry **EXCELLENT**

Fluorescence **SLIGHT**

Inscription(s) **LG763659873**

Comments: This Laboratory Grown Diamond was created by Chemical Vapor Deposition (CVD) growth process.  
Indications of post-growth treatment.



January 15, 2026  
IGI Report No **LG763659873**  
**ROUND BRILLIANT**  
6.73 - 6.75 X 4.13 MM  
1.17 CARAT  
**LIGHT BROWNISH PINK**  
Color Grade  
VS 2  
IDEAL  
61.3%  
59%  
Medium To Slightly Thick (Faceted)  
Pointed  
EXCELLENT  
EXCELLENT  
SLIGHT  
SLIGHT  
IGI LG763659873  
Comments: This Laboratory Grown Diamond was created by Chemical Vapor Deposition (CVD) growth process.  
Indications of post-growth treatment.