



ELECTRONIC COPY

LG763659848
Report verification at igi.org



January 16, 2026

IGI Report Number **LG763659848**

Description **LABORATORY GROWN DIAMOND**

Shape and Cutting Style **PEAR MODIFIED BRILLIANT**

Measurements **9.36 X 5.86 X 3.70 MM**

GRADING RESULTS

Carat Weight **1.39 CARAT**

Color Grade **FANCY VIVID PINK**

Clarity Grade **VS 1**

January 16, 2026

IGI Report Number **LG763659848**

Description **LABORATORY GROWN DIAMOND**

Shape and Cutting Style **PEAR MODIFIED BRILLIANT**

Measurements **9.36 X 5.86 X 3.70 MM**

GRADING RESULTS

Carat Weight **1.39 CARAT**

Color Grade **FANCY VIVID PINK**

Clarity Grade **VS 1**

ADDITIONAL GRADING INFORMATION

Polish **VERY GOOD**

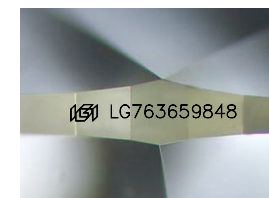
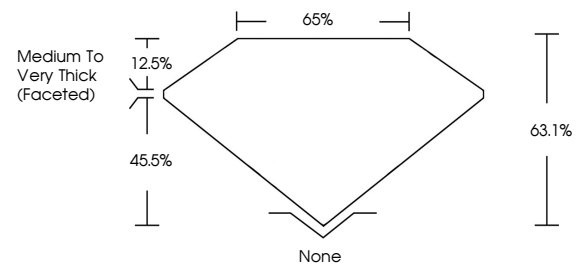
Symmetry **VERY GOOD**

Fluorescence **STRONG**

Inscription(s) **LG763659848**

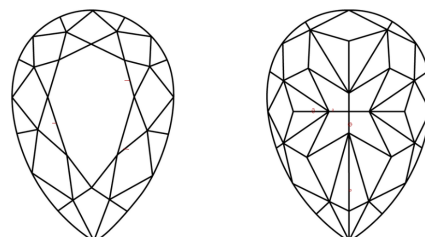
Comments: This Laboratory Grown Diamond was created by Chemical Vapor Deposition (CVD) growth process. Indications of post-growth treatment.

PROPORTIONS



Sample Image Used

CLARITY CHARACTERISTICS



KEY TO SYMBOLS

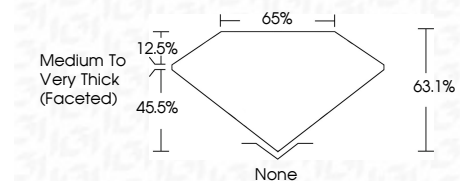
Red symbols indicate internal characteristics.
Green symbols indicate external characteristics.

COLOR

D E F G H I J Faint Very Light Light

CLARITY

| FL | IF | VS ¹⁻² | VS ¹⁻² | SI ¹⁻² | I ¹⁻³ |
|----------|---------------------|-----------------------------|------------------------|-------------------|------------------|
| Flawless | Internally Flawless | Very Very Slightly Included | Very Slightly Included | Slightly Included | Included |



ADDITIONAL GRADING INFORMATION

Polish **VERY GOOD**

Symmetry **VERY GOOD**

Fluorescence **STRONG**

Inscription(s) **LG763659848**

Comments: This Laboratory Grown Diamond was created by Chemical Vapor Deposition (CVD) growth process. Indications of post-growth treatment.



IGI



January 16, 2026
IGI Report No LG763659848
PEAR MODIFIED BRILLIANT

9.36 X 5.86 X 3.70 MM
1.39 CARAT
FANCY VIVID PINK
VS 1
63.1%
65%
Medium to Very Thick (Faceted)
None
VERY GOOD
VERY GOOD
STRONG
None
VERY GOOD
STRONG
 LG763659848

Comments: This Laboratory Grown Diamond was created by Chemical Vapor Deposition (CVD) growth process. Indications of post-growth treatment.