



ELECTRONIC COPY

LG763659824
Report verification at igi.org



January 16, 2026
IGI Report Number **LG763659824**
Description **LABORATORY GROWN DIAMOND**
Shape and Cutting Style **SQUARE CUSHION MODIFIED BRILLIANT**
Measurements **5.71 X 5.70 X 3.97 MM**
GRADING RESULTS
Carat Weight **1.07 CARAT**
Color Grade **FANCY INTENSE BROWNISH PINK**
Clarity Grade **VS 2**

LABORATORY GROWN DIAMOND REPORT

January 16, 2026
IGI Report Number **LG763659824**
Description **LABORATORY GROWN DIAMOND**
Shape and Cutting Style **SQUARE CUSHION MODIFIED BRILLIANT**
Measurements **5.71 X 5.70 X 3.97 MM**

GRADING RESULTS

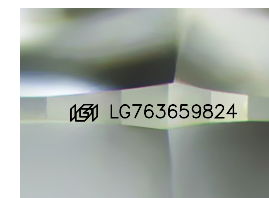
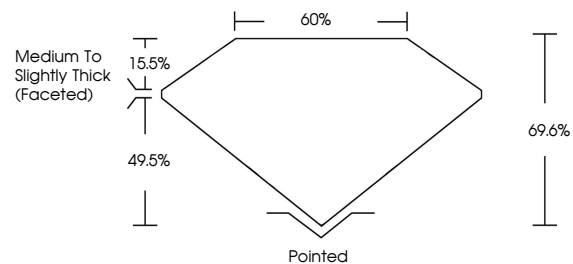
Carat Weight **1.07 CARAT**
Color Grade **FANCY INTENSE BROWNISH PINK**
Clarity Grade **VS 2**

ADDITIONAL GRADING INFORMATION

Polish **EXCELLENT**
Symmetry **EXCELLENT**
Fluorescence **SLIGHT**
Inscription(s) **(IGI) LG763659824**

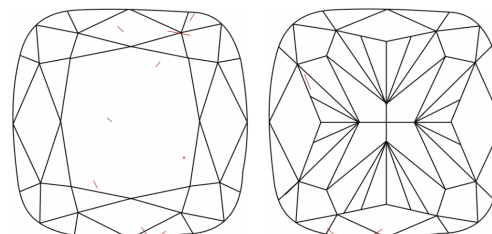
Comments: This Laboratory Grown Diamond was created by Chemical Vapor Deposition (CVD) growth process.
Indications of post-growth treatment.

PROPORTIONS



Sample Image Used

CLARITY CHARACTERISTICS



KEY TO SYMBOLS

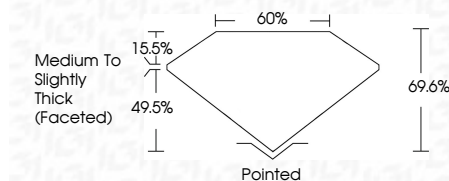
Red symbols indicate internal characteristics.
Green symbols indicate external characteristics.

COLOR

D E F G H I J Faint Very Light Light

CLARITY

FL	IF	VS ¹⁻²	VS ¹⁻²	SI ¹⁻²	I ¹⁻³
Flawless	Internally Flawless	Very Very Slightly Included	Very Slightly Included	Slightly Included	Included



ADDITIONAL GRADING INFORMATION

Polish **EXCELLENT**
Symmetry **EXCELLENT**
Fluorescence **SLIGHT**
Inscription(s) **(IGI) LG763659824**
Comments: This Laboratory Grown Diamond was created by Chemical Vapor Deposition (CVD) growth process.
Indications of post-growth treatment.



January 16, 2026
IGI Report No **LG763659824**
SQUARE CUSHION MODIFIED BRILLIANT
1.07 CARAT
FANCY INTENSE BROWNISH PINK
VS 2
5.71 X 5.70 X 3.97 MM
69.6%
60%
Medium to Slightly Thick (Faceted)
Pointed
EXCELLENT
EXCELLENT
SLIGHT
(IGI) LG763659824
Comments: This Laboratory Grown Diamond was created by Chemical Vapor Deposition (CVD) growth process.
Indications of post-growth treatment.