



ELECTRONIC COPY

LG763659819
Report verification at igi.org



January 16, 2026

IGI Report Number **LG763659819**

Description **LABORATORY GROWN DIAMOND**

Shape and Cutting Style **PRINCESS CUT**

Measurements **5.51 X 5.48 X 3.83 MM**

GRADING RESULTS

Carat Weight **1.04 CARAT**

Color Grade **FANCY VIVID BLUE**

Clarity Grade **VVS 2**

January 16, 2026
IGI Report Number **LG763659819**
Description **LABORATORY GROWN DIAMOND**
Shape and Cutting Style **PRINCESS CUT**
Measurements **5.51 X 5.48 X 3.83 MM**

GRADING RESULTS

Carat Weight **1.04 CARAT**

Color Grade **FANCY VIVID BLUE**

Clarity Grade **VVS 2**

ADDITIONAL GRADING INFORMATION

Polish **EXCELLENT**

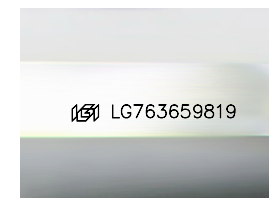
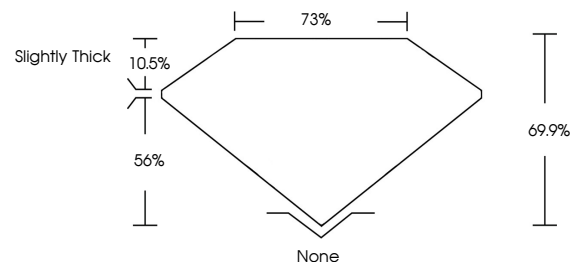
Symmetry **EXCELLENT**

Fluorescence **NONE**

Inscription(s) **LG763659819**

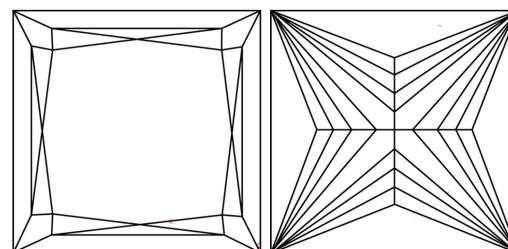
Comments: This Laboratory Grown Diamond was created by Chemical Vapor Deposition (CVD) growth process. Indications of post-growth treatment.

PROPORTIONS



Sample Image Used

CLARITY CHARACTERISTICS



KEY TO SYMBOLS

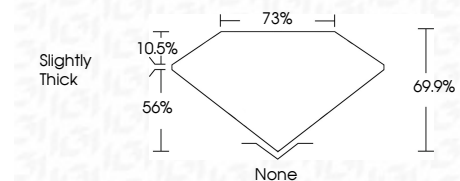
Red symbols indicate internal characteristics.
Green symbols indicate external characteristics.

COLOR

D E F G H I J Faint Very Light Light

CLARITY

FL	IF	VVS ¹⁻²	VS ¹⁻²	SI ¹⁻²	I ¹⁻³
Flawless	Internally Flawless	Very Very Slightly Included	Very Slightly Included	Slightly Included	Included



ADDITIONAL GRADING INFORMATION

Polish **EXCELLENT**

Symmetry **EXCELLENT**

Fluorescence **NONE**

Inscription(s) **LG763659819**

Comments: This Laboratory Grown Diamond was created by Chemical Vapor Deposition (CVD) growth process. Indications of post-growth treatment.



IGI



January 16, 2026
IGI Report No. **LG763659819**
PRINCESS CUT

1.04 CARAT
Carat Weight
FANCY VIVID BLUE
Color Grade
VVS 2
Clarity Grade
69.9%
Depth
73%
Table
Slightly Thick
Girdle
None
Culet
EXCELLENT
Polish
EXCELLENT
Symmetry
EXCELLENT
Fluorescence
NONE
Inscription(s)
 LG763659819

Comments: This Laboratory Grown Diamond was created by Chemical Vapor Deposition (CVD) growth process. Indications of post-growth treatment.