



ELECTRONIC COPY

LG763659691
Report verification at igi.org



January 13, 2026
IGI Report Number **LG763659691**
Description **LABORATORY GROWN DIAMOND**
Shape and Cutting Style **ROUND BRILLIANT**
Measurements **7.23 - 7.29 X 4.55 MM**
GRADING RESULTS
Carat Weight **1.50 CARAT**
Color Grade **FANCY INTENSE PINK**
Clarity Grade **I1**
Cut Grade **EXCELLENT**

January 13, 2026
IGI Report Number **LG763659691**
Description **LABORATORY GROWN DIAMOND**
Shape and Cutting Style **ROUND BRILLIANT**
Measurements **7.23 - 7.29 X 4.55 MM**

GRADING RESULTS

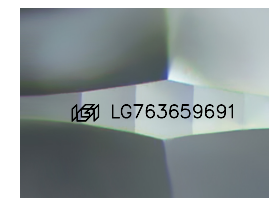
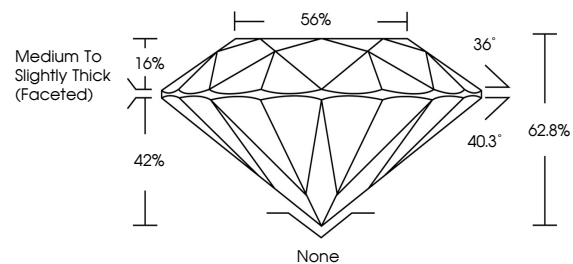
Carat Weight **1.50 CARAT**
Color Grade **FANCY INTENSE PINK**
Clarity Grade **I1**
Cut Grade **EXCELLENT**

ADDITIONAL GRADING INFORMATION

Polish **EXCELLENT**
Symmetry **VERY GOOD**
Fluorescence **SLIGHT**
Inscription(s) **LG763659691**

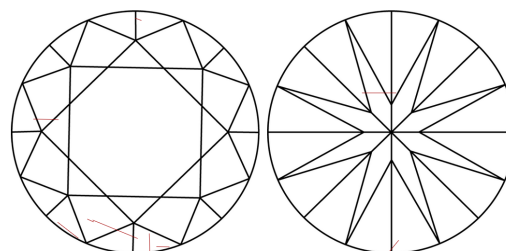
Comments: This Laboratory Grown Diamond was created by Chemical Vapor Deposition (CVD) growth process.
Indications of post-growth treatment.

PROPORTIONS



Sample Image Used

CLARITY CHARACTERISTICS



KEY TO SYMBOLS

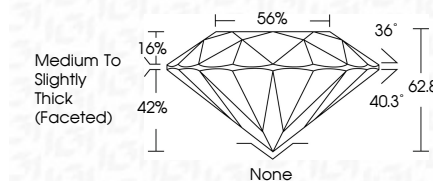
Red symbols indicate internal characteristics.
Green symbols indicate external characteristics.

COLOR

D E F G H I J Faint Very Light Light

CLARITY

FL	IF	VS ¹⁻²	VS ¹⁻²	SI ¹⁻²	I ¹⁻³
Flawless	Internally Flawless	Very Very Slightly Included	Very Slightly Included	Slightly Included	Included



ADDITIONAL GRADING INFORMATION

Polish **EXCELLENT**
Symmetry **VERY GOOD**
Fluorescence **SLIGHT**
Inscription(s) **LG763659691**
Comments: This Laboratory Grown Diamond was created by Chemical Vapor Deposition (CVD) growth process.
Indications of post-growth treatment.



January 13, 2026
IGI Report No LG763659691
ROUND BRILLIANT
1.50 CARAT
FANCY INTENSE PINK
I1
EXCELLENT
62.8%
56%
Medium To Slightly Thick (Faceted)
None
EXCELLENT
VERY GOOD
SLIGHT
 LG763659691
Comments: This Laboratory Grown Diamond was created by Chemical Vapor Deposition (CVD) growth process.
Indications of post-growth treatment.