



ELECTRONIC COPY

LG763659604
Report verification at igi.org



January 12, 2026

IGI Report Number **LG763659604**

Description **LABORATORY GROWN DIAMOND**

Shape and Cutting Style **ROUND BRILLIANT**

Measurements **7.59 - 7.64 X 4.71 MM**

GRADING RESULTS

Carat Weight **1.69 CARAT**

Color Grade **LIGHT BROWNISH PINK**

Clarity Grade **VS 2**

Cut Grade **IDEAL**

January 12, 2026
IGI Report Number **LG763659604**
Description **LABORATORY GROWN DIAMOND**
Shape and Cutting Style **ROUND BRILLIANT**
Measurements **7.59 - 7.64 X 4.71 MM**

GRADING RESULTS

Carat Weight **1.69 CARAT**

Color Grade **LIGHT BROWNISH PINK**

Clarity Grade **VS 2**

Cut Grade **IDEAL**

ADDITIONAL GRADING INFORMATION

Polish **EXCELLENT**

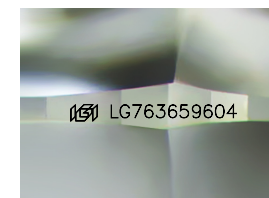
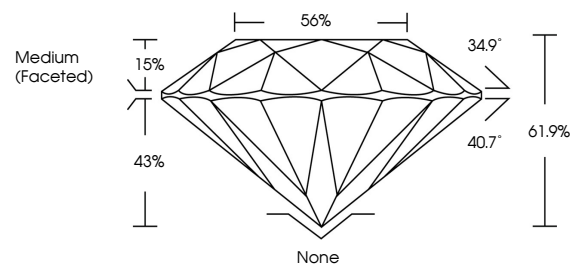
Symmetry **EXCELLENT**

Fluorescence **SLIGHT**

Inscription(s) **LG763659604**

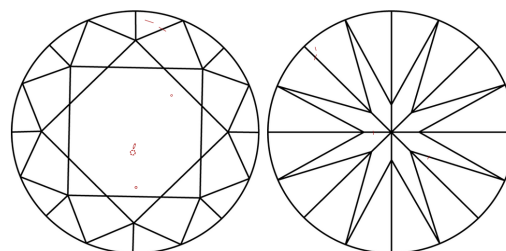
Comments: This Laboratory Grown Diamond was created by Chemical Vapor Deposition (CVD) growth process.
Indications of post-growth treatment.

PROPORTIONS



Sample Image Used

CLARITY CHARACTERISTICS



KEY TO SYMBOLS

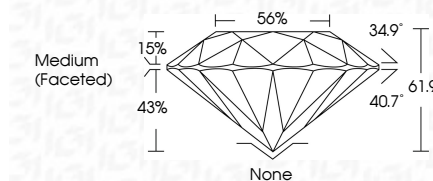
Red symbols indicate internal characteristics.
Green symbols indicate external characteristics.

COLOR

D E F G H I J Faint Very Light Light

CLARITY

| FL | IF | VS ¹⁻² | VS ¹⁻² | SI ¹⁻² | I ¹⁻³ |
|----------|---------------------|-----------------------------|------------------------|-------------------|------------------|
| Flawless | Internally Flawless | Very Very Slightly Included | Very Slightly Included | Slightly Included | Included |



ADDITIONAL GRADING INFORMATION

Polish **EXCELLENT**

Symmetry **EXCELLENT**

Fluorescence **SLIGHT**

Inscription(s) **LG763659604**

Comments: This Laboratory Grown Diamond was created by Chemical Vapor Deposition (CVD) growth process.
Indications of post-growth treatment.



January 12, 2026
IGI Report No **LG763659604**
ROUND BRILLIANT
1.69 CARAT
LIGHT BROWNISH PINK
VS 2
IDEAL
61.9%
56%
Medium (Faceted)
None
EXCELLENT
EXCELLENT
SLIGHT
SLIGHT
IGI LG763659604
Comments: This Laboratory Grown Diamond was created by Chemical Vapor Deposition (CVD) growth process.
Indications of post-growth treatment.