



ELECTRONIC COPY

LG763659548
Report verification at igi.org



January 8, 2026
IGI Report Number **LG763659548**
Description **LABORATORY GROWN DIAMOND**
Shape and Cutting Style **PRINCESS CUT**
Measurements **7.12 X 6.77 X 4.52 MM**
GRADING RESULTS
Carat Weight **2.01 CARATS**
Color Grade **FANCY INTENSE BROWNISH PINK**
Clarity Grade **VVS 1**

January 8, 2026
IGI Report Number **LG763659548**
Description **LABORATORY GROWN DIAMOND**
Shape and Cutting Style **PRINCESS CUT**
Measurements **7.12 X 6.77 X 4.52 MM**

GRADING RESULTS

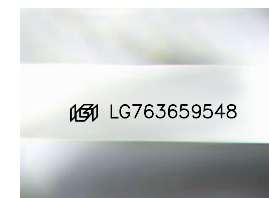
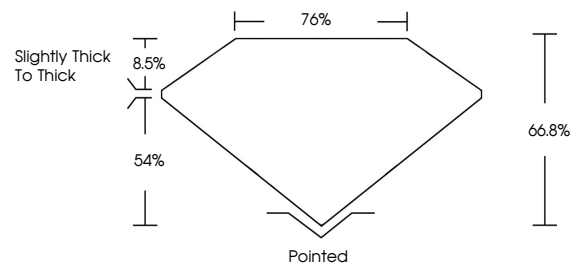
Carat Weight **2.01 CARATS**
Color Grade **FANCY INTENSE BROWNISH PINK**
Clarity Grade **VVS 1**

ADDITIONAL GRADING INFORMATION

Polish **VERY GOOD**
Symmetry **VERY GOOD**
Fluorescence **SLIGHT**
Inscription(s) **IGI LG763659548**

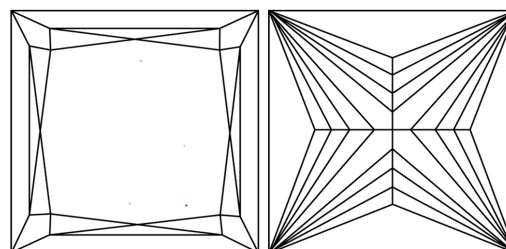
Comments: This Laboratory Grown Diamond was created by Chemical Vapor Deposition (CVD) growth process. Indications of post-growth treatment.

PROPORTIONS



Sample Image Used

CLARITY CHARACTERISTICS



KEY TO SYMBOLS

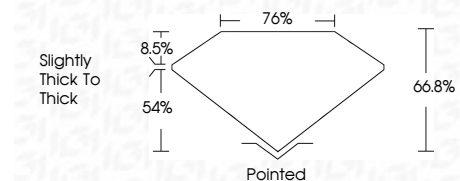
Red symbols indicate internal characteristics.
Green symbols indicate external characteristics.

COLOR

D E F G H I J Faint Very Light Light

CLARITY

FL	IF	VVS ¹⁻²	VS ¹⁻²	SI ¹⁻²	I ¹⁻³
Flawless	Internally Flawless	Very Very Slightly Included	Very Slightly Included	Slightly Included	Included



ADDITIONAL GRADING INFORMATION

Polish **VERY GOOD**
Symmetry **VERY GOOD**
Fluorescence **SLIGHT**
Inscription(s) **IGI LG763659548**
Comments: This Laboratory Grown Diamond was created by Chemical Vapor Deposition (CVD) growth process. Indications of post-growth treatment.



January 8, 2026
IGI Report No **LG763659548**
PRINCESS CUT
2.01 CARATS
Carat Weight
FANCY INTENSE BROWNISH PINK
Color Grade
VVS 1
Clarity Grade
66.8%
Depth
76%
Table
Slightly Thick To Thick
Girdle
Pointed
Culet
VERY GOOD
Polish
VERY GOOD
Symmetry
SLIGHT
Fluorescence
IGI LG763659548
Inscription(s)

Comments: This Laboratory Grown Diamond was created by Chemical Vapor Deposition (CVD) growth process. Indications of post-growth treatment.