



ELECTRONIC COPY

LG763659547
Report verification at igi.org



January 10, 2026
IGI Report Number **LG763659547**
Description **LABORATORY GROWN DIAMOND**
Shape and Cutting Style **EMERALD CUT**
Measurements **7.97 X 5.42 X 3.80 MM**
GRADING RESULTS
Carat Weight **1.64 CARAT**
Color Grade **FANCY INTENSE BROWNISH PINK**
Clarity Grade **VS 1**

LABORATORY GROWN DIAMOND REPORT

January 10, 2026
IGI Report Number **LG763659547**
Description **LABORATORY GROWN DIAMOND**
Shape and Cutting Style **EMERALD CUT**
Measurements **7.97 X 5.42 X 3.80 MM**

GRADING RESULTS

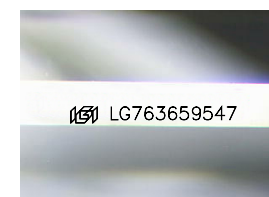
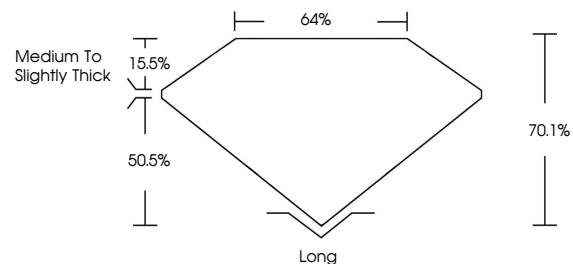
Carat Weight **1.64 CARAT**
Color Grade **FANCY INTENSE BROWNISH PINK**
Clarity Grade **VS 1**

ADDITIONAL GRADING INFORMATION

Polish **EXCELLENT**
Symmetry **EXCELLENT**
Fluorescence **SLIGHT**
Inscription(s) **IGI LG763659547**

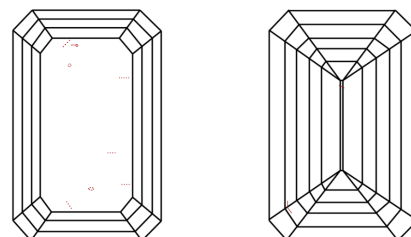
Comments: This Laboratory Grown Diamond was created by Chemical Vapor Deposition (CVD) growth process. Indications of post-growth treatment.

PROPORTIONS



Sample Image Used

CLARITY CHARACTERISTICS



KEY TO SYMBOLS

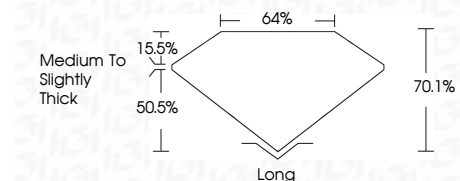
Red symbols indicate internal characteristics.
Green symbols indicate external characteristics.

COLOR

D E F G H I J Faint Very Light Light

CLARITY

FL	IF	VS ¹⁻²	VS ¹⁻²	SI ¹⁻²	I ¹⁻³
Flawless	Internally Flawless	Very Very Slightly Included	Very Slightly Included	Slightly Included	Included



ADDITIONAL GRADING INFORMATION

Polish **EXCELLENT**
Symmetry **EXCELLENT**
Fluorescence **SLIGHT**
Inscription(s) **IGI LG763659547**
Comments: This Laboratory Grown Diamond was created by Chemical Vapor Deposition (CVD) growth process. Indications of post-growth treatment.



January 10, 2026
IGI Report No **LG763659547**
EMERALD CUT
1.64 CARAT
Carat Weight
Color Grade **FANCY INTENSE BROWNISH PINK**
Clarity Grade **VS 1**
Table **70.1%**
Girdle **64%**
Medium to Slightly Thick
Culet **Long**
Polish **EXCELLENT**
Symmetry **EXCELLENT**
Fluorescence **SLIGHT**
Inscription(s) **IGI LG763659547**
Comments: This Laboratory Grown Diamond was created by Chemical Vapor Deposition (CVD) growth process. Indications of post-growth treatment.