



**ELECTRONIC COPY**

LG763659521  
Report verification at igi.org



January 12, 2026  
IGI Report Number **LG763659521**  
Description **LABORATORY GROWN DIAMOND**  
Shape and Cutting Style **EMERALD CUT**  
Measurements **8.02 X 5.16 X 3.69 MM**  
**GRADING RESULTS**  
Carat Weight **1.71 CARAT**  
Color Grade **FANCY VIVID BROWNISH PINK**  
Clarity Grade **VVS 2**

January 12, 2026  
IGI Report Number **LG763659521**  
Description **LABORATORY GROWN DIAMOND**  
Shape and Cutting Style **EMERALD CUT**  
Measurements **8.02 X 5.16 X 3.69 MM**

**GRADING RESULTS**

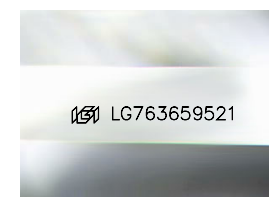
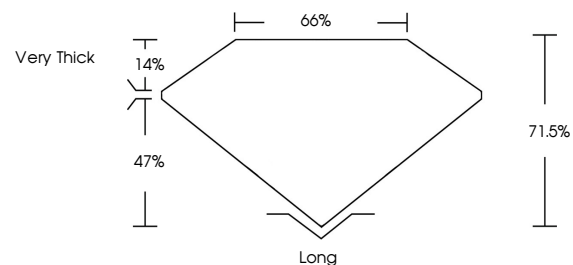
Carat Weight **1.71 CARAT**  
Color Grade **FANCY VIVID BROWNISH PINK**  
Clarity Grade **VVS 2**

**ADDITIONAL GRADING INFORMATION**

Polish **VERY GOOD**  
Symmetry **VERY GOOD**  
Fluorescence **SLIGHT**  
Inscription(s) **LG763659521**

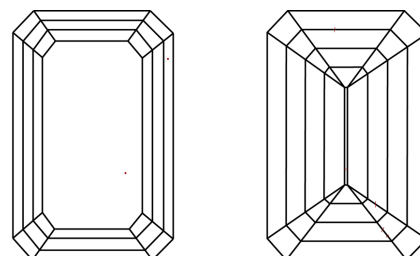
Comments: This Laboratory Grown Diamond was created by Chemical Vapor Deposition (CVD) growth process.  
Indications of post-growth treatment.

**PROPORTIONS**



Sample Image Used

**CLARITY CHARACTERISTICS**



**KEY TO SYMBOLS**

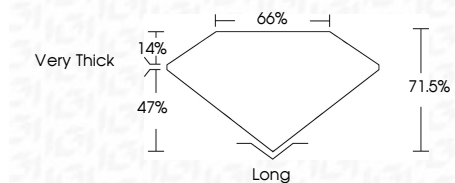
Red symbols indicate internal characteristics.  
Green symbols indicate external characteristics.

**COLOR**

D E F G H I J Faint Very Light Light

**CLARITY**

FL	IF	VVS <sup>1-2</sup>	VS <sup>1-2</sup>	SI <sup>1-2</sup>	I <sup>1-3</sup>
Flawless	Internally Flawless	Very Very Slightly Included	Very Slightly Included	Slightly Included	Included



**ADDITIONAL GRADING INFORMATION**

Polish **VERY GOOD**  
Symmetry **VERY GOOD**  
Fluorescence **SLIGHT**  
Inscription(s) **LG763659521**  
Comments: This Laboratory Grown Diamond was created by Chemical Vapor Deposition (CVD) growth process.  
Indications of post-growth treatment.



January 12, 2026  
IGI Report No **LG763659521**  
**EMERALD CUT**  
1.71 CARAT  
FANCY VIVID BROWNISH PINK  
Color Grade  
VVS 2  
Clarity Grade  
71.6%  
Table  
66%  
Girdle  
Very Thick  
Culet  
Long  
Polish  
VERY GOOD  
Symmetry  
VERY GOOD  
Fluorescence  
SLIGHT  
Inscription(s)  
 **LG763659521**  
Comments: This Laboratory Grown Diamond was created by Chemical Vapor Deposition (CVD) growth process.  
Indications of post-growth treatment.