



**ELECTRONIC COPY**

LG763659517  
Report verification at igi.org



January 12, 2026  
IGI Report Number **LG763659517**  
Description **LABORATORY GROWN DIAMOND**  
Shape and Cutting Style **EMERALD CUT**  
Measurements **8.53 X 5.78 X 3.59 MM**  
**GRADING RESULTS**  
Carat Weight **1.81 CARAT**  
Color Grade **FANCY BROWN**  
Clarity Grade **VS 1**

January 12, 2026  
IGI Report Number **LG763659517**  
Description **LABORATORY GROWN DIAMOND**  
Shape and Cutting Style **EMERALD CUT**  
Measurements **8.53 X 5.78 X 3.59 MM**

**GRADING RESULTS**

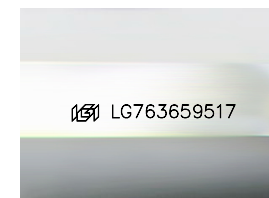
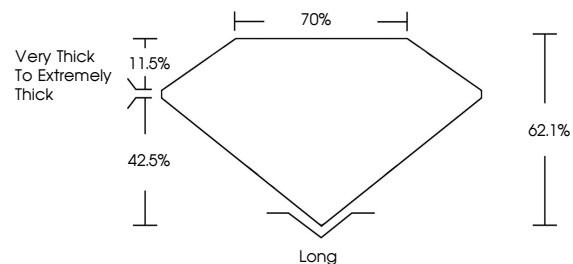
Carat Weight **1.81 CARAT**  
Color Grade **FANCY BROWN**  
Clarity Grade **VS 1**

**ADDITIONAL GRADING INFORMATION**

Polish **VERY GOOD**  
Symmetry **EXCELLENT**  
Fluorescence **VERY SLIGHT**  
Inscription(s) **IGI LG763659517**

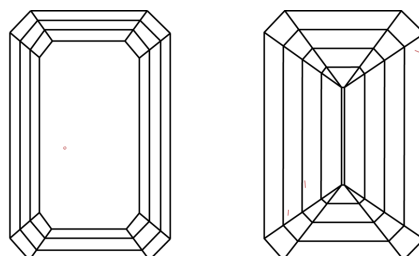
Comments: This Laboratory Grown Diamond was created by Chemical Vapor Deposition (CVD) growth process.  
Indications of post-growth treatment.

**PROPORTIONS**



Sample Image Used

**CLARITY CHARACTERISTICS**



**KEY TO SYMBOLS**

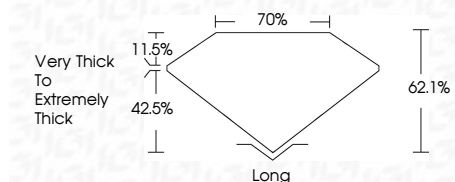
Red symbols indicate internal characteristics.  
Green symbols indicate external characteristics.

**COLOR**

D E F G H I J Faint Very Light Light

**CLARITY**

FL	IF	VS <sup>1-2</sup>	VS <sup>1-2</sup>	SI <sup>1-2</sup>	I <sup>1-3</sup>
Flawless	Internally Flawless	Very Very Slightly Included	Very Slightly Included	Slightly Included	Included



**ADDITIONAL GRADING INFORMATION**

Polish **VERY GOOD**  
Symmetry **EXCELLENT**  
Fluorescence **VERY SLIGHT**  
Inscription(s) **IGI LG763659517**  
Comments: This Laboratory Grown Diamond was created by Chemical Vapor Deposition (CVD) growth process.  
Indications of post-growth treatment.



January 12, 2026  
IGI Report No. **LG763659517**  
**EMERALD CUT**  
**1.81 CARAT**  
Carat Weight **FANCY BROWN**  
Color Grade **VS 1**  
Depth **62.1%**  
Table **70%**  
Girdle **Very Thick to Extremely Thick**  
Culet **Long**  
Polish **VERY GOOD**  
Symmetry **EXCELLENT**  
Fluorescence **VERY SLIGHT**  
Inscription(s) **IGI LG763659517**  
Comments: This Laboratory Grown Diamond was created by Chemical Vapor Deposition (CVD) growth process.  
Indications of post-growth treatment.