



ELECTRONIC COPY

LG763659495
Report verification at igi.org



January 13, 2026
IGI Report Number **LG763659495**
Description **LABORATORY GROWN DIAMOND**
Shape and Cutting Style **CUSHION MODIFIED BRILLIANT**
Measurements **7.88 X 6.74 X 4.10 MM**
GRADING RESULTS
Carat Weight **1.91 CARAT**
Color Grade **FANCY VIVID PINK**
Clarity Grade **VS 1**

LABORATORY GROWN DIAMOND REPORT

January 13, 2026
IGI Report Number **LG763659495**
Description **LABORATORY GROWN DIAMOND**
Shape and Cutting Style **CUSHION MODIFIED BRILLIANT**
Measurements **7.88 X 6.74 X 4.10 MM**

GRADING RESULTS

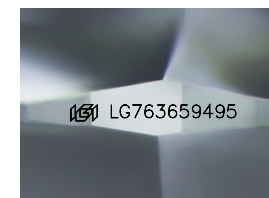
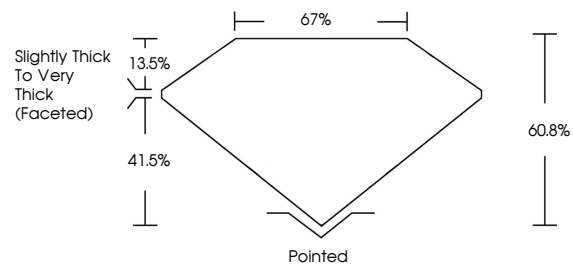
Carat Weight **1.91 CARAT**
Color Grade **FANCY VIVID PINK**
Clarity Grade **VS 1**

ADDITIONAL GRADING INFORMATION

Polish **VERY GOOD**
Symmetry **VERY GOOD**
Fluorescence **SLIGHT**
Inscription(s) **LG763659495**

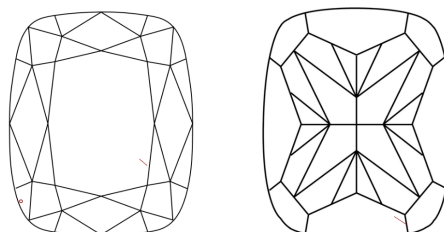
Comments: This Laboratory Grown Diamond was created by Chemical Vapor Deposition (CVD) growth process.
Indications of post-growth treatment.

PROPORTIONS



Sample Image Used

CLARITY CHARACTERISTICS



KEY TO SYMBOLS

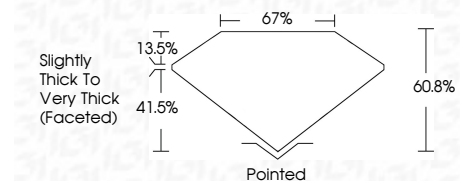
Red symbols indicate internal characteristics.
Green symbols indicate external characteristics.

COLOR

D E F G H I J Faint Very Light Light

CLARITY

FL	IF	VS ¹⁻²	VS ¹⁻²	SI ¹⁻²	I ¹⁻³
Flawless	Internally Flawless	Very Very Slightly Included	Very Slightly Included	Slightly Included	Included



ADDITIONAL GRADING INFORMATION

Polish **VERY GOOD**
Symmetry **VERY GOOD**
Fluorescence **SLIGHT**
Inscription(s) **LG763659495**
Comments: This Laboratory Grown Diamond was created by Chemical Vapor Deposition (CVD) growth process.
Indications of post-growth treatment.



January 13, 2026
IGI Report No **LG763659495**
CUSHION MODIFIED BRILLIANT
7.88 X 6.74 X 4.10 MM
1.91 CARAT
FANCY VIVID PINK
VS 1
60.8%
67%
Slightly Thick To Very Thick (Faceted)
Pointed
VERY GOOD
VERY GOOD
SLIGHT
Faint
IGI LG763659495
Comments: This Laboratory Grown Diamond was created by Chemical Vapor Deposition (CVD) growth process.
Indications of post-growth treatment.