



ELECTRONIC COPY

LG763659490
Report verification at igi.org



January 13, 2026
IGI Report Number **LG763659490**
Description **LABORATORY GROWN DIAMOND**
Shape and Cutting Style **ROUND BRILLIANT**
Measurements **8.23 - 8.25 X 5.06 MM**
GRADING RESULTS
Carat Weight **2.12 CARATS**
Color Grade **FANCY BROWNISH PINK**
Clarity Grade **VS 1**
Cut Grade **VERY GOOD**

January 13, 2026
IGI Report Number **LG763659490**
Description **LABORATORY GROWN DIAMOND**
Shape and Cutting Style **ROUND BRILLIANT**
Measurements **8.23 - 8.25 X 5.06 MM**

GRADING RESULTS

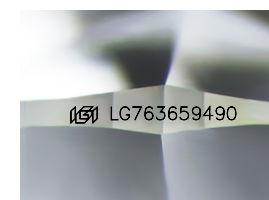
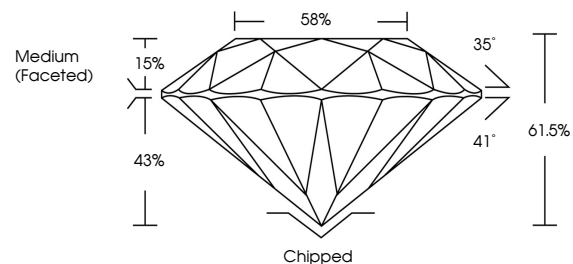
Carat Weight **2.12 CARATS**
Color Grade **FANCY BROWNISH PINK**
Clarity Grade **VS 1**
Cut Grade **VERY GOOD**

ADDITIONAL GRADING INFORMATION

Polish **GOOD**
Symmetry **EXCELLENT**
Fluorescence **SLIGHT**
Inscription(s) **IGI LG763659490**

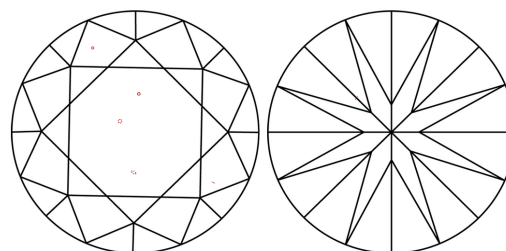
Comments: This Laboratory Grown Diamond was created by Chemical Vapor Deposition (CVD) growth process.
Indications of post-growth treatment.

PROPORTIONS



Sample Image Used

CLARITY CHARACTERISTICS



KEY TO SYMBOLS

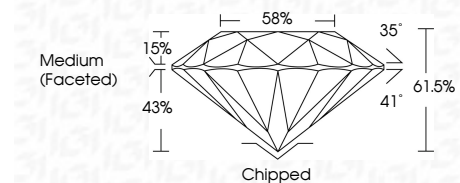
Red symbols indicate internal characteristics.
Green symbols indicate external characteristics.

COLOR

D E F G H I J Faint Very Light Light

CLARITY

FL	IF	VS ¹⁻²	VS ¹⁻²	SI ¹⁻²	I ¹⁻³
Flawless	Internally Flawless	Very Very Slightly Included	Very Slightly Included	Slightly Included	Included



ADDITIONAL GRADING INFORMATION

Polish **GOOD**
Symmetry **EXCELLENT**
Fluorescence **SLIGHT**
Inscription(s) **IGI LG763659490**
Comments: This Laboratory Grown Diamond was created by Chemical Vapor Deposition (CVD) growth process.
Indications of post-growth treatment.



January 13, 2026
IGI Report No LG763659490
ROUND BRILLIANT
8.23 - 8.25 X 5.06 MM
Carat Weight **2.12 CARATS**
Color Grade **FANCY BROWNISH PINK**
Clarity Grade **VS 1**
Depth **VERY GOOD**
Table **61.5%**
Girdle **58%**
Medium (Faceted)
Culet **Chipped**
Polish **GOOD**
Symmetry **EXCELLENT**
Fluorescence **SLIGHT**
Inscription(s) **IGI LG763659490**
Comments: This Laboratory Grown Diamond was created by Chemical Vapor Deposition (CVD) growth process.
Indications of post-growth treatment.