



ELECTRONIC COPY

LG763659487
Report verification at igi.org



January 13, 2026

IGI Report Number **LG763659487**

Description **LABORATORY GROWN DIAMOND**

Shape and Cutting Style **PRINCESS CUT**

Measurements **6.85 X 6.84 X 4.77 MM**

GRADING RESULTS

Carat Weight **2.01 CARATS**

Color Grade **FANCY INTENSE PINK**

Clarity Grade **VS 1**

January 13, 2026
IGI Report Number **LG763659487**
Description **LABORATORY GROWN DIAMOND**
Shape and Cutting Style **PRINCESS CUT**
Measurements **6.85 X 6.84 X 4.77 MM**

GRADING RESULTS

Carat Weight **2.01 CARATS**

Color Grade **FANCY INTENSE PINK**

Clarity Grade **VS 1**

ADDITIONAL GRADING INFORMATION

Polish **EXCELLENT**

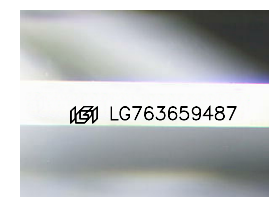
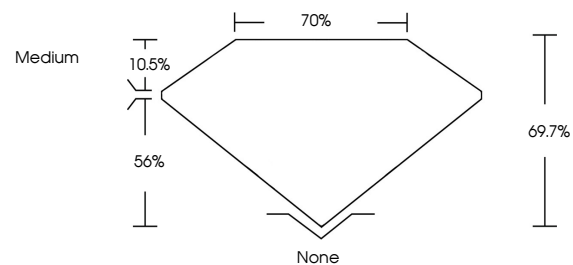
Symmetry **EXCELLENT**

Fluorescence **SLIGHT**

Inscription(s) **LG763659487**

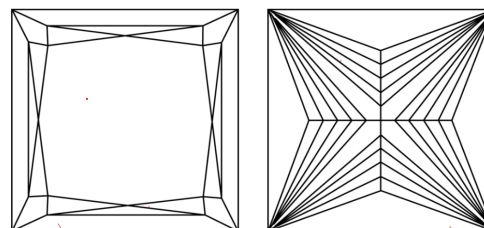
Comments: This Laboratory Grown Diamond was created by Chemical Vapor Deposition (CVD) growth process. Indications of post-growth treatment.

PROPORTIONS



Sample Image Used

CLARITY CHARACTERISTICS



KEY TO SYMBOLS

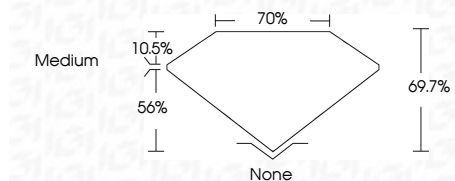
Red symbols indicate internal characteristics.
Green symbols indicate external characteristics.

COLOR

D E F G H I J Faint Very Light Light

CLARITY

FL	IF	VS ¹⁻²	VS ¹⁻²	SI ¹⁻²	I ¹⁻³
Flawless	Internally Flawless	Very Very Slightly Included	Very Slightly Included	Slightly Included	Included



ADDITIONAL GRADING INFORMATION

Polish **EXCELLENT**

Symmetry **EXCELLENT**

Fluorescence **SLIGHT**

Inscription(s) **LG763659487**

Comments: This Laboratory Grown Diamond was created by Chemical Vapor Deposition (CVD) growth process. Indications of post-growth treatment.



IGI



January 13, 2026
IGI Report No **LG763659487**
PRINCESS CUT
2.01 CARATS
Carat Weight **FANCY INTENSE PINK**
Color Grade **VS 1**
Depth **69.7%**
Table **70%**
Girdle **Medium**
Culet **None**
Polish **EXCELLENT**
Symmetry **EXCELLENT**
Fluorescence **SLIGHT**
Inscription(s) **LG763659487**
Comments: This Laboratory Grown Diamond was created by Chemical Vapor Deposition (CVD) growth process. Indications of post-growth treatment.