



**ELECTRONIC COPY**

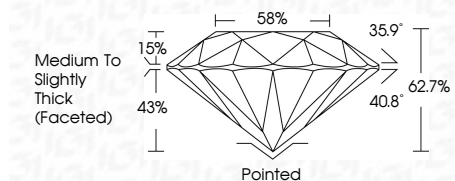
LG763659470  
Report verification at igi.org



January 10, 2026  
IGI Report Number **LG763659470**  
Description **LABORATORY GROWN DIAMOND**  
Shape and Cutting Style **ROUND BRILLIANT**  
Measurements **8.24 - 8.27 X 5.18 MM**

**GRADING RESULTS**

Carat Weight **2.21 CARATS**  
Color Grade **FANCY LIGHT BROWNISH PINK**  
Clarity Grade **VS 2**  
Cut Grade **EXCELLENT**

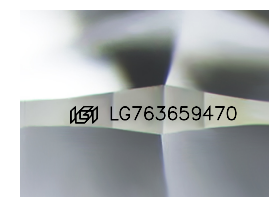


**ADDITIONAL GRADING INFORMATION**

Polish **EXCELLENT**  
Symmetry **EXCELLENT**  
Fluorescence **SLIGHT**  
Inscription(s) **IGI LG763659470**  
Comments: This Laboratory Grown Diamond was created by Chemical Vapor Deposition (CVD) growth process. Indications of post-growth treatment.

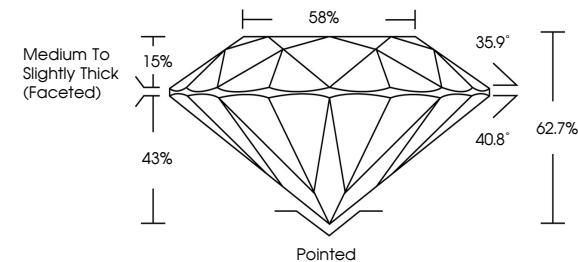


January 10, 2026  
IGI Report No LG763659470  
**ROUND BRILLIANT**  
2.21 CARATS  
Carat Weight  
Color Grade **FANCY LIGHT BROWNISH PINK**  
Clarity Grade **VS 2**  
Cut Grade **EXCELLENT**  
Depth **62.7%**  
Table **15%**  
Girdle **Medium To Slightly Thick (Faceted)**  
Culet **Pointed**  
Polish **EXCELLENT**  
Symmetry **EXCELLENT**  
Fluorescence **SLIGHT**  
Inscriptions(s) **IGI LG763659470**  
Comments: This Laboratory Grown Diamond was created by Chemical Vapor Deposition (CVD) growth process. Indications of post-growth treatment.

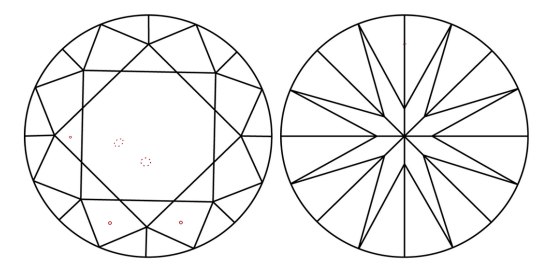


Sample Image Used

**PROPORTIONS**



**CLARITY CHARACTERISTICS**



**KEY TO SYMBOLS**  
Red symbols indicate internal characteristics.  
Green symbols indicate external characteristics.

**COLOR**

D	E	F	G	H	I	J	Faint	Very Light	Light
---	---	---	---	---	---	---	-------	------------	-------

**CLARITY**

FL	IF	VS <sup>1-2</sup>	VS <sup>1-2</sup>	SI <sup>1-2</sup>	I <sup>1-3</sup>
Flawless	Internally Flawless	Very Very Slightly Included	Very Slightly Included	Slightly Included	Included

