



ELECTRONIC COPY

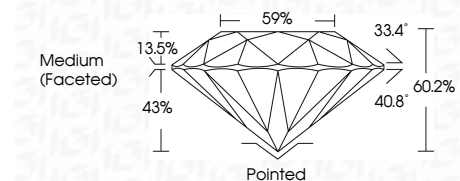
LG763659465
Report verification at igi.org



January 10, 2026
IGI Report Number **LG763659465**
Description **LABORATORY GROWN DIAMOND**
Shape and Cutting Style **ROUND BRILLIANT**
Measurements **8.33 - 8.35 X 5.02 MM**

GRADING RESULTS

Carat Weight **2.14 CARATS**
Color Grade **FANCY LIGHT BROWNISH PINK**
Clarity Grade **VS 1**
Cut Grade **IDEAL**



ADDITIONAL GRADING INFORMATION

Polish **EXCELLENT**
Symmetry **EXCELLENT**
Fluorescence **SLIGHT**
Inscription(s) **(IGI) LG763659465**
Comments: This Laboratory Grown Diamond was created by Chemical Vapor Deposition (CVD) growth process. Indications of post-growth treatment.



January 10, 2026
IGI Report No LG763659465
ROUND BRILLIANT
8.33 - 8.35 X 5.02 MM
2.14 CARATS
FANCY LIGHT BROWNISH PINK
VS 1
IDEAL
60.2%
59%
Medium (Faceted)
Pointed
EXCELLENT
EXCELLENT
SLIGHT
SLIGHT
(IGI) LG763659465
Comments: This Laboratory Grown Diamond was created by Chemical Vapor Deposition (CVD) growth process. Indications of post-growth treatment.

January 10, 2026
IGI Report Number **LG763659465**
Description **LABORATORY GROWN DIAMOND**
Shape and Cutting Style **ROUND BRILLIANT**
Measurements **8.33 - 8.35 X 5.02 MM**

GRADING RESULTS

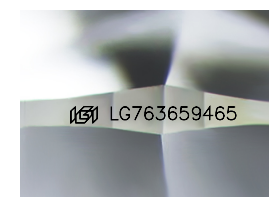
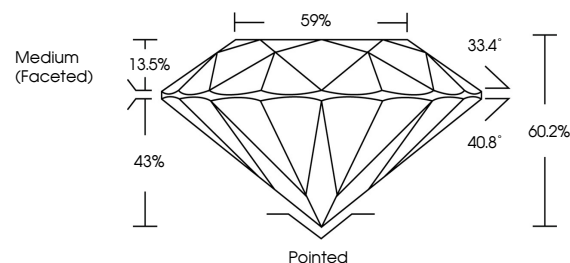
Carat Weight **2.14 CARATS**
Color Grade **FANCY LIGHT BROWNISH PINK**
Clarity Grade **VS 1**
Cut Grade **IDEAL**

ADDITIONAL GRADING INFORMATION

Polish **EXCELLENT**
Symmetry **EXCELLENT**
Fluorescence **SLIGHT**
Inscription(s) **(IGI) LG763659465**

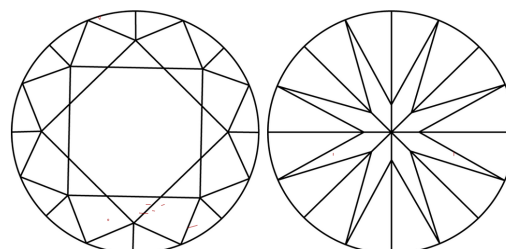
Comments: This Laboratory Grown Diamond was created by Chemical Vapor Deposition (CVD) growth process. Indications of post-growth treatment.

PROPORTIONS



Sample Image Used

CLARITY CHARACTERISTICS



KEY TO SYMBOLS

Red symbols indicate internal characteristics.
Green symbols indicate external characteristics.

COLOR

D E F G H I J Faint Very Light Light

CLARITY

FL	IF	VS ¹⁻²	VS ¹⁻²	SI ¹⁻²	I ¹⁻³
Flawless	Internally Flawless	Very Very Slightly Included	Very Slightly Included	Slightly Included	Included

