



**ELECTRONIC COPY**

LG763659458  
Report verification at [igi.org](http://igi.org)



January 12, 2026  
IGI Report Number **LG763659458**  
Description **LABORATORY GROWN DIAMOND**  
Shape and Cutting Style **HEART BRILLIANT**  
Measurements **6.99 X 7.75 X 4.74 MM**  
**GRADING RESULTS**  
Carat Weight **1.50 CARAT**  
Color Grade **FANCY INTENSE PINK**  
Clarity Grade **SI 2**

January 12, 2026  
IGI Report Number **LG763659458**  
Description **LABORATORY GROWN DIAMOND**  
Shape and Cutting Style **HEART BRILLIANT**  
Measurements **6.99 X 7.75 X 4.74 MM**

**GRADING RESULTS**

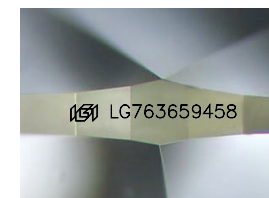
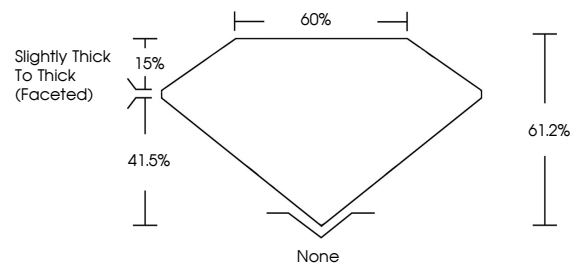
Carat Weight **1.50 CARAT**  
Color Grade **FANCY INTENSE PINK**  
Clarity Grade **SI 2**

**ADDITIONAL GRADING INFORMATION**

Polish **EXCELLENT**  
Symmetry **EXCELLENT**  
Fluorescence **STRONG**  
Inscription(s) **LG763659458**

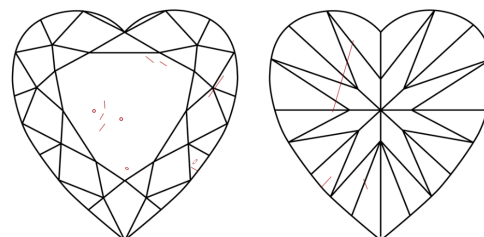
Comments: This Laboratory Grown Diamond was created by Chemical Vapor Deposition (CVD) growth process.  
Indications of post-growth treatment.

**PROPORTIONS**



Sample Image Used

**CLARITY CHARACTERISTICS**



**KEY TO SYMBOLS**

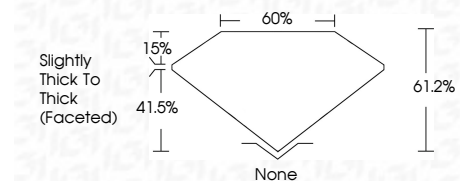
Red symbols indicate internal characteristics.  
Green symbols indicate external characteristics.

**COLOR**

D E F G H I J Faint Very Light Light

**CLARITY**

FL	IF	VS <sup>1-2</sup>	VS <sup>1-2</sup>	SI <sup>1-2</sup>	I <sup>1-3</sup>
Flawless	Internally Flawless	Very Very Slightly Included	Very Slightly Included	Slightly Included	Included



**ADDITIONAL GRADING INFORMATION**

Polish **EXCELLENT**  
Symmetry **EXCELLENT**  
Fluorescence **STRONG**  
Inscription(s) **LG763659458**  
Comments: This Laboratory Grown Diamond was created by Chemical Vapor Deposition (CVD) growth process.  
Indications of post-growth treatment.



January 12, 2026  
IGI Report No **LG763659458**  
**HEART BRILLIANT**  
**6.99 X 7.75 X 4.74 MM**  
Carat Weight **1.50 CARAT**  
Color Grade **FANCY INTENSE PINK**  
Clarity Grade **SI 2**  
Depth **61.2%**  
Table **60%**  
Girdle **Slightly Thick To Thick (Faceted)**  
Culet **None**  
Polish **EXCELLENT**  
Symmetry **EXCELLENT**  
Fluorescence **STRONG**  
Inscription(s) **LG763659458**  
Comments: This Laboratory Grown Diamond was created by Chemical Vapor Deposition (CVD) growth process.  
Indications of post-growth treatment.