



ELECTRONIC COPY

LG763659349
Report verification at igi.org



January 17, 2026

IGI Report Number **LG763659349**

Description **LABORATORY GROWN DIAMOND**

Shape and Cutting Style **ROUND BRILLIANT**

Measurements **6.57 - 6.63 X 4.08 MM**

GRADING RESULTS

Carat Weight **1.08 CARAT**

Color Grade **FANCY DEEP ORANGY
BROWN**

Clarity Grade **VS 1**

Cut Grade **IDEAL**

January 17, 2026
IGI Report Number **LG763659349**
Description **LABORATORY GROWN DIAMOND**
Shape and Cutting Style **ROUND BRILLIANT**
Measurements **6.57 - 6.63 X 4.08 MM**

GRADING RESULTS

Carat Weight **1.08 CARAT**

Color Grade **FANCY DEEP ORANGY
BROWN**

Clarity Grade **VS 1**

Cut Grade **IDEAL**

ADDITIONAL GRADING INFORMATION

Polish **VERY GOOD**

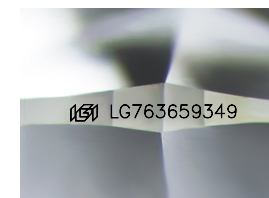
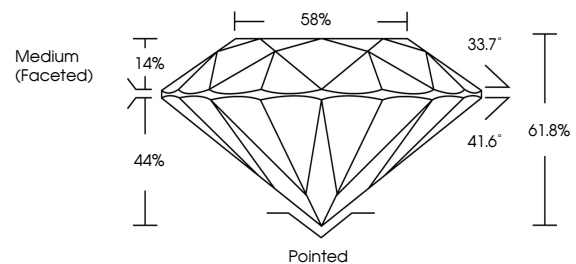
Symmetry **VERY GOOD**

Fluorescence **NONE**

Inscription(s) **IGI LG763659349**

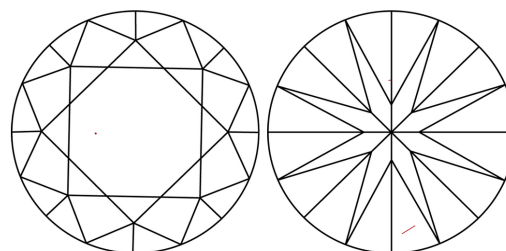
Comments: This Laboratory Grown Diamond was created by Chemical Vapor Deposition (CVD) growth process.
Indications of post-growth treatment.

PROPORTIONS



Sample Image Used

CLARITY CHARACTERISTICS



KEY TO SYMBOLS

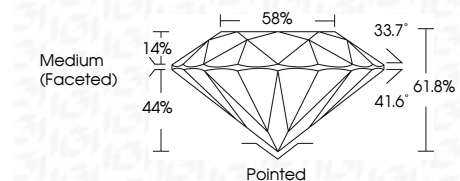
Red symbols indicate internal characteristics.
Green symbols indicate external characteristics.

COLOR

D E F G H I J Faint Very Light Light

CLARITY

FL	IF	VS ¹⁻²	VS ¹⁻²	SI ¹⁻²	I ¹⁻³
Flawless	Internally Flawless	Very Very Slightly Included	Very Slightly Included	Slightly Included	Included



ADDITIONAL GRADING INFORMATION

Polish **VERY GOOD**

Symmetry **VERY GOOD**

Fluorescence **NONE**

Inscription(s) **IGI LG763659349**

Comments: This Laboratory Grown Diamond was created by Chemical Vapor Deposition (CVD) growth process.
Indications of post-growth treatment.



January 17, 2026
IGI Report No LG763659349
ROUND BRILLIANT
6.57 - 6.63 X 4.08 MM
1.08 CARAT
FANCY DEEP ORANGY BROWN
VS 1
IDEAL
61.8%
58%
Medium (Faceted)Pointed
VERY GOOD
VERY GOOD
VERY GOOD
NONE
IGI LG763659349

Comments: This Laboratory Grown Diamond was created by Chemical Vapor Deposition (CVD) growth process.
Indications of post-growth treatment.