



ELECTRONIC COPY

LG763659345
Report verification at igi.org



January 17, 2026

IGI Report Number **LG763659345**

Description **LABORATORY GROWN DIAMOND**

Shape and Cutting Style **ROUND BRILLIANT**

Measurements **6.56 - 6.58 X 3.99 MM**

GRADING RESULTS

Carat Weight **1.06 CARAT**

Color Grade **FANCY VIVID BROWNISH PINK**

Clarity Grade **VS 1**

Cut Grade **IDEAL**

January 17, 2026

IGI Report Number **LG763659345**

Description **LABORATORY GROWN DIAMOND**

Shape and Cutting Style **ROUND BRILLIANT**

Measurements **6.56 - 6.58 X 3.99 MM**

GRADING RESULTS

Carat Weight **1.06 CARAT**

Color Grade **FANCY VIVID BROWNISH PINK**

Clarity Grade **VS 1**

Cut Grade **IDEAL**

ADDITIONAL GRADING INFORMATION

Polish **VERY GOOD**

Symmetry **VERY GOOD**

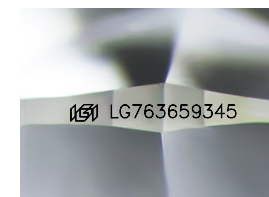
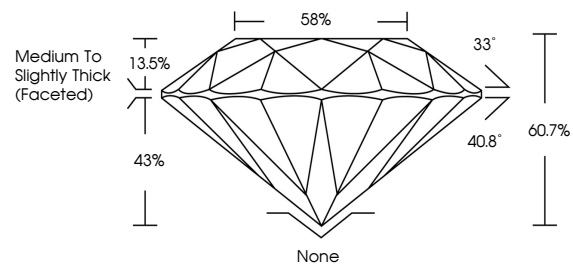
Fluorescence **SLIGHT**

Inscription(s) **LG763659345**

Comments: This Laboratory Grown Diamond was created by Chemical Vapor Deposition (CVD) growth process.

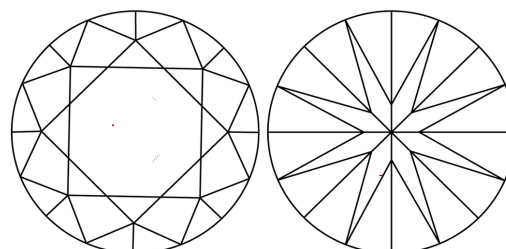
Indications of post-growth treatment.

PROPORTIONS



Sample Image Used

CLARITY CHARACTERISTICS



KEY TO SYMBOLS

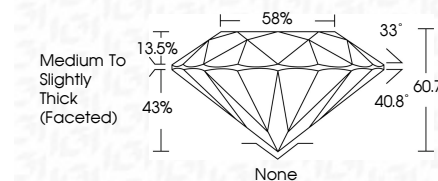
Red symbols indicate internal characteristics.
Green symbols indicate external characteristics.

COLOR

D E F G H I J Faint Very Light Light

CLARITY

| FL | IF | VS ¹⁻² | VS ¹⁻² | SI ¹⁻² | I ¹⁻³ |
|----------|---------------------|-----------------------------|------------------------|-------------------|------------------|
| Flawless | Internally Flawless | Very Very Slightly Included | Very Slightly Included | Slightly Included | Included |



ADDITIONAL GRADING INFORMATION

Polish **VERY GOOD**

Symmetry **VERY GOOD**

Fluorescence **SLIGHT**

Inscription(s) **LG763659345**

Comments: This Laboratory Grown Diamond was created by Chemical Vapor Deposition (CVD) growth process. Indications of post-growth treatment.



January 17, 2026
IGI Report No LG763659345
ROUND BRILLIANT

1.06 CARAT
FANCY VIVID BROWNISH PINK
VS 1
IDEAL
60.7%
58%
Medium To Slightly Thick (Faceted)

None
VERY GOOD
VERY GOOD
SLIGHT
None
VERY GOOD
SLIGHT
None

Comments: This Laboratory Grown Diamond was created by Chemical Vapor Deposition (CVD) growth process. Indications of post-growth treatment.