



ELECTRONIC COPY

LG763659316
Report verification at igi.org



January 12, 2026

IGI Report Number **LG763659316**

Description **LABORATORY GROWN DIAMOND**

Shape and Cutting Style **ROUND BRILLIANT**

Measurements **6.53 - 6.55 X 3.94 MM**

GRADING RESULTS

Carat Weight **1.01 CARAT**

Color Grade **FANCY DEEP ORANGY
BROWN**

Clarity Grade **VS 1**

Cut Grade **EXCELLENT**

January 12, 2026
IGI Report Number **LG763659316**
Description **LABORATORY GROWN DIAMOND**
Shape and Cutting Style **ROUND BRILLIANT**
Measurements **6.53 - 6.55 X 3.94 MM**

GRADING RESULTS

Carat Weight **1.01 CARAT**

Color Grade **FANCY DEEP ORANGY
BROWN**

Clarity Grade **VS 1**

Cut Grade **EXCELLENT**

ADDITIONAL GRADING INFORMATION

Polish **EXCELLENT**

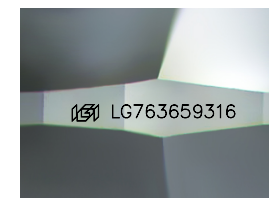
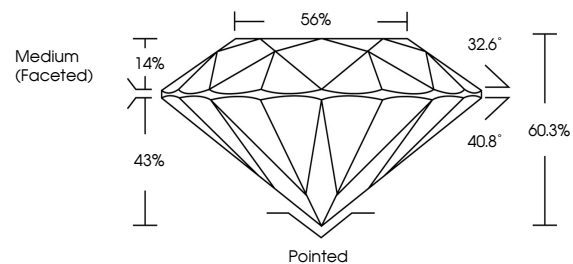
Symmetry **EXCELLENT**

Fluorescence **NONE**

Inscription(s) **IGI LG763659316**

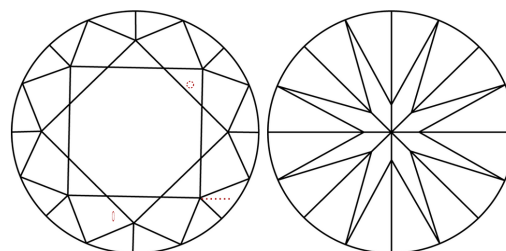
Comments: This Laboratory Grown Diamond was created by Chemical Vapor Deposition (CVD) growth process.
Indications of post-growth treatment.

PROPORTIONS



Sample Image Used

CLARITY CHARACTERISTICS



KEY TO SYMBOLS

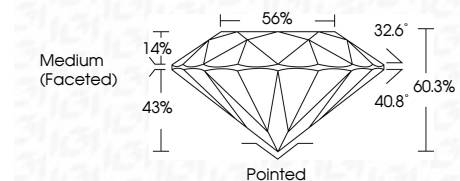
Red symbols indicate internal characteristics.
Green symbols indicate external characteristics.

COLOR

D E F G H I J Faint Very Light Light

CLARITY

FL	IF	VS ¹⁻²	VS ¹⁻²	SI ¹⁻²	I ¹⁻³
Flawless	Internally Flawless	Very Very Slightly Included	Very Slightly Included	Slightly Included	Included



ADDITIONAL GRADING INFORMATION

Polish **EXCELLENT**

Symmetry **EXCELLENT**

Fluorescence **NONE**

Inscription(s) **IGI LG763659316**

Comments: This Laboratory Grown Diamond was created by Chemical Vapor Deposition (CVD) growth process.
Indications of post-growth treatment.



January 12, 2026	1.01 CARAT	Pointed
IGI Report No LG763659316	FANCY DEEP ORANGY BROWN	EXCELLENT
ROUND BRILLIANT	VS 1	EXCELLENT
6.53 - 6.55 X 3.94 MM	EXCELLENT	NONE
Carat Weight	60.3%	None
Color Grade	56%	None
Clarity Grade	Medium (Faceted)	None
Cut Grade	IGI LG763659316	None
Depth		
Table		
Girdle		
Culet		
Polish		
Symmetry		
Fluorescence		
Inscription(s)		

Comments: This Laboratory Grown Diamond was created by Chemical Vapor Deposition (CVD) growth process.
Indications of post-growth treatment.