



ELECTRONIC COPY

LG763659280
Report verification at igi.org



January 12, 2026
IGI Report Number **LG763659280**
Description **LABORATORY GROWN DIAMOND**
Shape and Cutting Style **EMERALD CUT**
Measurements **6.59 X 4.82 X 2.99 MM**
GRADING RESULTS
Carat Weight **1.01 CARAT**
Color Grade **FANCY INTENSE BROWNISH PINK**
Clarity Grade **VS 2**

LABORATORY GROWN DIAMOND REPORT

January 12, 2026
IGI Report Number **LG763659280**
Description **LABORATORY GROWN DIAMOND**
Shape and Cutting Style **EMERALD CUT**
Measurements **6.59 X 4.82 X 2.99 MM**

GRADING RESULTS

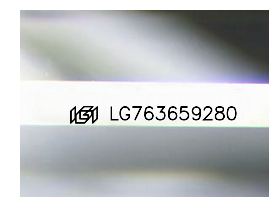
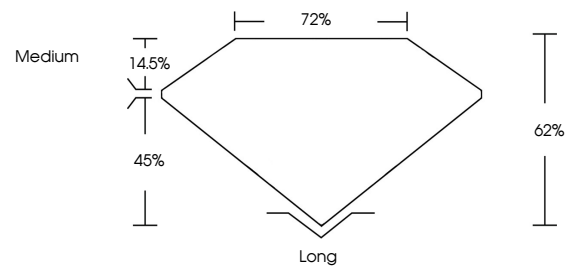
Carat Weight **1.01 CARAT**
Color Grade **FANCY INTENSE BROWNISH PINK**
Clarity Grade **VS 2**

ADDITIONAL GRADING INFORMATION

Polish **EXCELLENT**
Symmetry **EXCELLENT**
Fluorescence **SLIGHT**
Inscription(s) **IGI LG763659280**

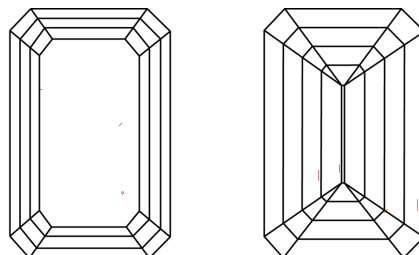
Comments: This Laboratory Grown Diamond was created by Chemical Vapor Deposition (CVD) growth process. Indications of post-growth treatment.

PROPORTIONS



Sample Image Used

CLARITY CHARACTERISTICS



KEY TO SYMBOLS

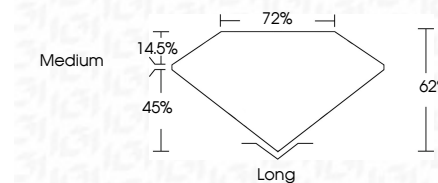
Red symbols indicate internal characteristics.
Green symbols indicate external characteristics.

COLOR

D E F G H I J Faint Very Light Light

CLARITY

FL	IF	VS ¹⁻²	VS ¹⁻²	SI ¹⁻²	I ¹⁻³
Flawless	Internally Flawless	Very Very Slightly Included	Very Slightly Included	Slightly Included	Included



ADDITIONAL GRADING INFORMATION

Polish **EXCELLENT**
Symmetry **EXCELLENT**
Fluorescence **SLIGHT**
Inscription(s) **IGI LG763659280**
Comments: This Laboratory Grown Diamond was created by Chemical Vapor Deposition (CVD) growth process. Indications of post-growth treatment.



January 12, 2026
IGI Report No LG763659280
EMERALD CUT
1.01 CARAT
6.59 X 4.82 X 2.99 MM
FANCY INTENSE BROWNISH PINK
Color Grade
VS 2
Clarity Grade
62%
72%
Medium
Long
EXCELLENT
EXCELLENT
SLIGHT
IGI LG763659280
Comments: This Laboratory Grown Diamond was created by Chemical Vapor Deposition (CVD) growth process. Indications of post-growth treatment.