



ELECTRONIC COPY

LG763659279
Report verification at igi.org



January 10, 2026

IGI Report Number **LG763659279**

Description **LABORATORY GROWN DIAMOND**

Shape and Cutting Style **EMERALD CUT**

Measurements **7.31 X 4.78 X 3.31 MM**

GRADING RESULTS

Carat Weight **1.20 CARAT**

Color Grade **FANCY INTENSE PINK**

Clarity Grade **VS 2**

LABORATORY GROWN DIAMOND REPORT

January 10, 2026

IGI Report Number **LG763659279**

Description **LABORATORY GROWN DIAMOND**

Shape and Cutting Style **EMERALD CUT**

Measurements **7.31 X 4.78 X 3.31 MM**

GRADING RESULTS

Carat Weight **1.20 CARAT**

Color Grade **FANCY INTENSE PINK**

Clarity Grade **VS 2**

ADDITIONAL GRADING INFORMATION

Polish **EXCELLENT**

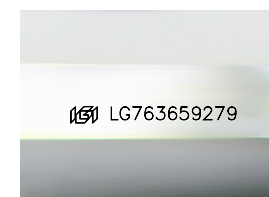
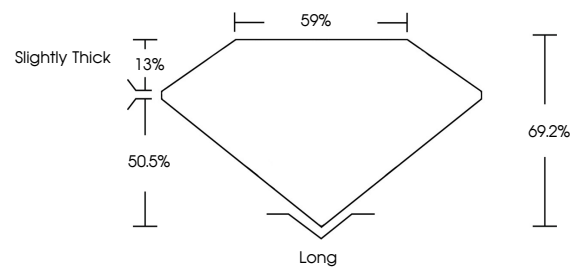
Symmetry **EXCELLENT**

Fluorescence **SLIGHT**

Inscription(s) **LG763659279**

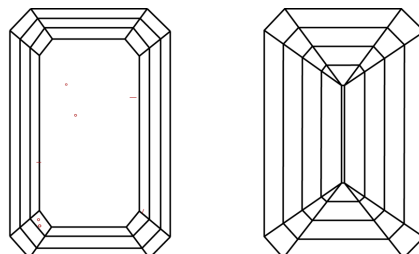
Comments: This Laboratory Grown Diamond was created by Chemical Vapor Deposition (CVD) growth process. Indications of post-growth treatment.

PROPORTIONS



Sample Image Used

CLARITY CHARACTERISTICS



KEY TO SYMBOLS

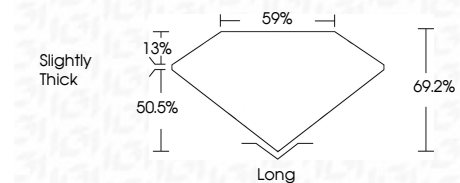
Red symbols indicate internal characteristics.
Green symbols indicate external characteristics.

COLOR

D E F G H I J Faint Very Light Light

CLARITY

FL	IF	VS ¹⁻²	VS ¹⁻²	SI ¹⁻²	I ¹⁻³
Flawless	Internally Flawless	Very Very Slightly Included	Very Slightly Included	Slightly Included	Included



ADDITIONAL GRADING INFORMATION

Polish **EXCELLENT**

Symmetry **EXCELLENT**

Fluorescence **SLIGHT**

Inscription(s) **LG763659279**

Comments: This Laboratory Grown Diamond was created by Chemical Vapor Deposition (CVD) growth process. Indications of post-growth treatment.



January 10, 2026
IGI Report No LG763659279
EMERALD CUT

1.20 CARAT
FANCY INTENSE PINK

7.31 X 4.78 X 3.31 MM

Color Grade VS 2
Depth 50.5%
Table 59%
Girdle Slightly Thick

Long
Polish EXCELLENT
Symmetry EXCELLENT
Fluorescence SLIGHT
Inscription(s) LG763659279

Comments: This Laboratory Grown Diamond was created by Chemical Vapor Deposition (CVD) growth process. Indications of post-growth treatment.