



**ELECTRONIC COPY**

LG763659252  
Report verification at igi.org



January 12, 2026

IGI Report Number **LG763659252**

Description **LABORATORY GROWN DIAMOND**

Shape and Cutting Style **ROUND BRILLIANT**

Measurements **6.87 - 6.90 X 4.15 MM**

**GRADING RESULTS**

Carat Weight **1.21 CARAT**

Color Grade **FANCY DEEP ORANGY  
BROWN**

Clarity Grade **VS 1**

Cut Grade **IDEAL**

January 12, 2026

IGI Report Number **LG763659252**

Description **LABORATORY GROWN DIAMOND**

Shape and Cutting Style **ROUND BRILLIANT**

Measurements **6.87 - 6.90 X 4.15 MM**

**GRADING RESULTS**

Carat Weight **1.21 CARAT**

Color Grade **FANCY DEEP ORANGY  
BROWN**

Clarity Grade **VS 1**

Cut Grade **IDEAL**

**ADDITIONAL GRADING INFORMATION**

Polish **EXCELLENT**

Symmetry **EXCELLENT**

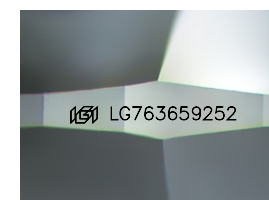
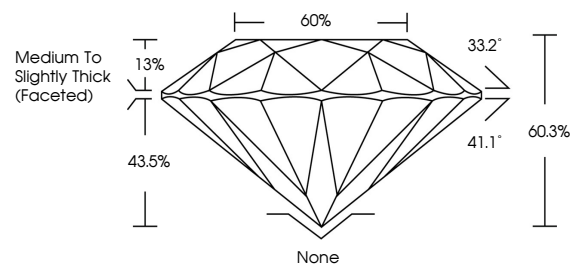
Fluorescence **NONE**

Inscription(s) **IGI LG763659252**

Comments: This Laboratory Grown Diamond was created by Chemical Vapor Deposition (CVD) growth process.

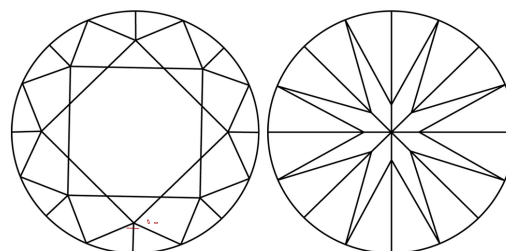
Indications of post-growth treatment.

**PROPORTIONS**



Sample Image Used

**CLARITY CHARACTERISTICS**



**KEY TO SYMBOLS**

Red symbols indicate internal characteristics.  
Green symbols indicate external characteristics.

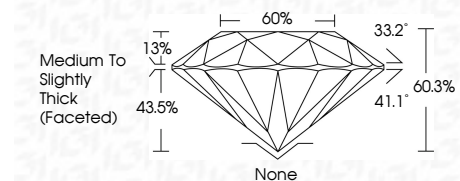
**COLOR**

D E F G H I J Faint Very Light Light

**CLARITY**

FL IF VS<sup>1-2</sup> VS<sup>1-2</sup> SI<sup>1-2</sup> I<sup>1-3</sup>

Flawless Internally Flawless Very Very Slightly Included Very Slightly Included Slightly Included Included



**ADDITIONAL GRADING INFORMATION**

Polish **EXCELLENT**

Symmetry **EXCELLENT**

Fluorescence **NONE**

Inscription(s) **IGI LG763659252**

Comments: This Laboratory Grown Diamond was created by Chemical Vapor Deposition (CVD) growth process.

Indications of post-growth treatment.



January 12, 2026  
IGI Report No LG763659252  
ROUND BRILLIANT  
6.87 - 6.90 X 4.15 MM  
1.21 CARAT  
FANCY DEEP ORANGY BROWN  
VS 1  
IDEAL  
60.3%  
Medium To Slightly Thick (Faceted)  
None  
EXCELLENT  
EXCELLENT  
NONE  
IGI LG763659252

Cutler  
Polish  
Symmetry  
Fluorescence  
Inscriptions(s)

Comments: This Laboratory Grown Diamond was created by Chemical Vapor Deposition (CVD) growth process. Indications of post-growth treatment.