



ELECTRONIC COPY

LG763659246
Report verification at igi.org



January 12, 2026

IGI Report Number **LG763659246**

Description **LABORATORY GROWN DIAMOND**

Shape and Cutting Style **EMERALD CUT**

Measurements **6.97 X 4.78 X 3.18 MM**

GRADING RESULTS

Carat Weight **1.10 CARAT**

Color Grade **FANCY INTENSE PINK**

Clarity Grade **VS 1**

LABORATORY GROWN DIAMOND REPORT

January 12, 2026

IGI Report Number **LG763659246**

Description **LABORATORY GROWN DIAMOND**

Shape and Cutting Style **EMERALD CUT**

Measurements **6.97 X 4.78 X 3.18 MM**

GRADING RESULTS

Carat Weight **1.10 CARAT**

Color Grade **FANCY INTENSE PINK**

Clarity Grade **VS 1**

ADDITIONAL GRADING INFORMATION

Polish **EXCELLENT**

Symmetry **EXCELLENT**

Fluorescence **SLIGHT**

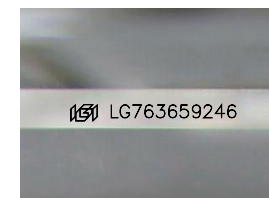
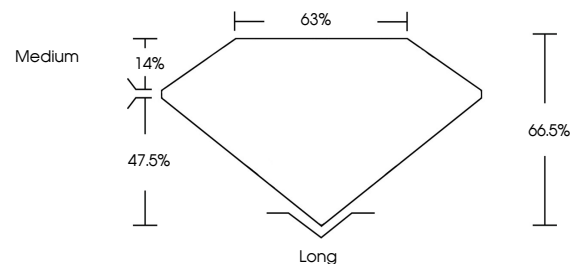
Inscription(s) **LG763659246**

Comments: This Laboratory Grown Diamond was created by Chemical Vapor Deposition (CVD) growth process.

Indications of post-growth treatment.

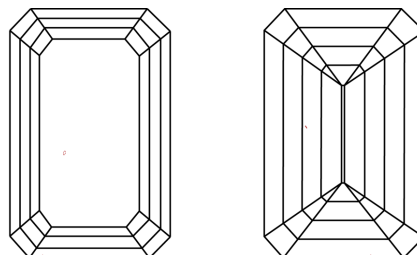
Secondary color: Brown

PROPORTIONS



Sample Image Used

CLARITY CHARACTERISTICS



KEY TO SYMBOLS

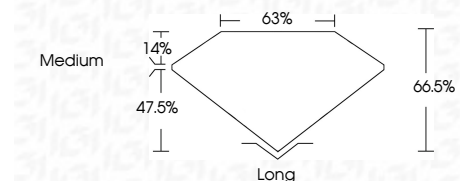
Red symbols indicate internal characteristics.
Green symbols indicate external characteristics.

COLOR

D E F G H I J Faint Very Light Light

CLARITY

FL	IF	VS ¹⁻²	VS ¹⁻²	SI ¹⁻²	I ¹⁻³
Flawless	Internally Flawless	Very Very Slightly Included	Very Slightly Included	Slightly Included	Included



ADDITIONAL GRADING INFORMATION

Polish **EXCELLENT**

Symmetry **EXCELLENT**

Fluorescence **SLIGHT**

Inscription(s) **LG763659246**

Comments: This Laboratory Grown Diamond was created by Chemical Vapor Deposition (CVD) growth process.

Indications of post-growth treatment.

Secondary color: Brown



January 12, 2026
IGI Report No LG763659246
EMERALD CUT

1.10 CARAT
6.97 X 4.78 X 3.18 MM

FANCY INTENSE PINK
Color Grade

VS 1
Clarity Grade

66.5%
Depth

63%
Table

Medium
Girdle

Long
Culet

EXCELLENT
Polish

EXCELLENT
Symmetry

SLIGHT
Fluorescence

LG763659246
Inscription(s)

Comments: This Laboratory Grown Diamond was created by Chemical Vapor Deposition (CVD) growth process. Indications of post-growth treatment. Secondary color: Brown