



ELECTRONIC COPY

LG763659240
Report verification at igi.org



January 12, 2026
IGI Report Number **LG763659240**
Description **LABORATORY GROWN DIAMOND**
Shape and Cutting Style **ROUND BRILLIANT**
Measurements **6.72 - 6.77 X 4.09 MM**
GRADING RESULTS
Carat Weight **1.16 CARAT**
Color Grade **FANCY DEEP ORANGY BROWN**
Clarity Grade **VS 1**
Cut Grade **VERY GOOD**

January 12, 2026
IGI Report Number **LG763659240**
Description **LABORATORY GROWN DIAMOND**
Shape and Cutting Style **ROUND BRILLIANT**
Measurements **6.72 - 6.77 X 4.09 MM**

GRADING RESULTS

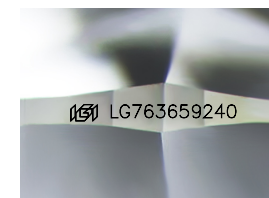
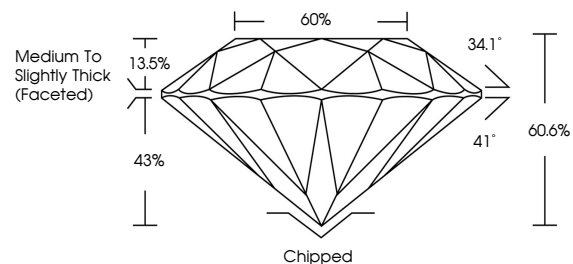
Carat Weight **1.16 CARAT**
Color Grade **FANCY DEEP ORANGY BROWN**
Clarity Grade **VS 1**
Cut Grade **VERY GOOD**

ADDITIONAL GRADING INFORMATION

Polish **GOOD**
Symmetry **EXCELLENT**
Fluorescence **NONE**
Inscription(s) **IGI LG763659240**

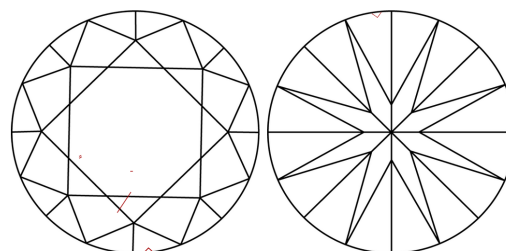
Comments: This Laboratory Grown Diamond was created by Chemical Vapor Deposition (CVD) growth process.
Indications of post-growth treatment.

PROPORTIONS



Sample Image Used

CLARITY CHARACTERISTICS



KEY TO SYMBOLS

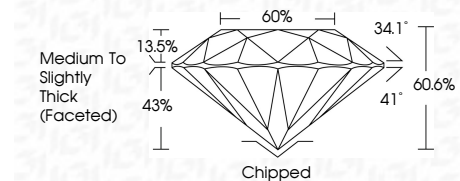
Red symbols indicate internal characteristics.
Green symbols indicate external characteristics.

COLOR

D E F G H I J Faint Very Light Light

CLARITY

FL	IF	VS ¹⁻²	VS ¹⁻²	SI ¹⁻²	I ¹⁻³
Flawless	Internally Flawless	Very Very Slightly Included	Very Slightly Included	Slightly Included	Included



ADDITIONAL GRADING INFORMATION

Polish **GOOD**
Symmetry **EXCELLENT**
Fluorescence **NONE**
Inscription(s) **IGI LG763659240**
Comments: This Laboratory Grown Diamond was created by Chemical Vapor Deposition (CVD) growth process.
Indications of post-growth treatment.



January 12, 2026
IGI Report No **LG763659240**
ROUND BRILLIANT
Carat Weight **1.16 CARAT**
Color Grade **FANCY DEEP ORANGY BROWN**
Clarity Grade **VS 1**
Cut Grade **VERY GOOD**
Depth **60.6%**
Table **60%**
Girdle **Medium To Slightly Thick (Faceted)**
Culet **Chipped**
Polish **GOOD**
Symmetry **EXCELLENT**
Fluorescence **NONE**
Inscriptions(s) **IGI LG763659240**
Comments: This Laboratory Grown Diamond was created by Chemical Vapor Deposition (CVD) growth process.
Indications of post-growth treatment.