



ELECTRONIC COPY

LG763659210
Report verification at igi.org



January 12, 2026
IGI Report Number **LG763659210**
Description **LABORATORY GROWN DIAMOND**
Shape and Cutting Style **CUSHION MODIFIED BRILLIANT**
Measurements **6.89 X 4.90 X 3.30 MM**
GRADING RESULTS
Carat Weight **1.05 CARAT**
Color Grade **FANCY VIVID BLUE**
Clarity Grade **SI 1**

LABORATORY GROWN DIAMOND REPORT

January 12, 2026
IGI Report Number **LG763659210**
Description **LABORATORY GROWN DIAMOND**
Shape and Cutting Style **CUSHION MODIFIED BRILLIANT**
Measurements **6.89 X 4.90 X 3.30 MM**

GRADING RESULTS

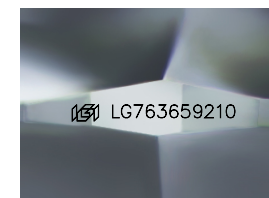
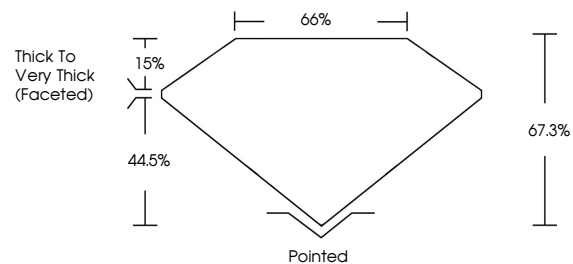
Carat Weight **1.05 CARAT**
Color Grade **FANCY VIVID BLUE**
Clarity Grade **SI 1**

ADDITIONAL GRADING INFORMATION

Polish **EXCELLENT**
Symmetry **VERY GOOD**
Fluorescence **NONE**
Inscription(s) **IGI LG763659210**

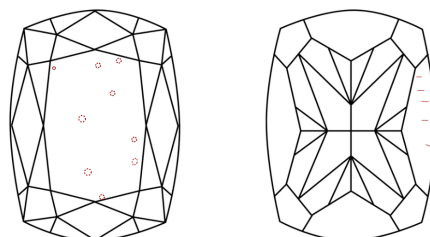
Comments: This Laboratory Grown Diamond was created by Chemical Vapor Deposition (CVD) growth process.
Indications of post-growth treatment.

PROPORTIONS



Sample Image Used

CLARITY CHARACTERISTICS



KEY TO SYMBOLS

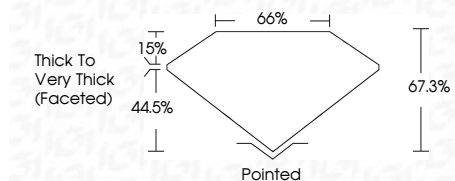
Red symbols indicate internal characteristics.
Green symbols indicate external characteristics.

COLOR

D E F G H I J Faint Very Light Light

CLARITY

FL	IF	VS ¹⁻²	VS ¹⁻²	SI ¹⁻²	I ¹⁻³
Flawless	Internally Flawless	Very Very Slightly Included	Very Slightly Included	Slightly Included	Included



ADDITIONAL GRADING INFORMATION

Polish **EXCELLENT**
Symmetry **VERY GOOD**
Fluorescence **NONE**
Inscription(s) **IGI LG763659210**
Comments: This Laboratory Grown Diamond was created by Chemical Vapor Deposition (CVD) growth process.
Indications of post-growth treatment.



January 12, 2026
IGI Report No **LG763659210**
CUSHION MODIFIED BRILLIANT
6.89 X 4.90 X 3.30 MM
Carat Weight **1.05 CARAT**
Color Grade **FANCY VIVID BLUE**
Clarity Grade **SI 1**
Depth **67.3%**
Table **66%**
Girdle **Thick to Very Thick (Faceted)**
Culet **Pointed**
Polish **EXCELLENT**
Symmetry **VERY GOOD**
Fluorescence **NONE**
Inscription(s) **IGI LG763659210**
Comments: This Laboratory Grown Diamond was created by Chemical Vapor Deposition (CVD) growth process.
Indications of post-growth treatment.