



**ELECTRONIC COPY**

**LABORATORY GROWN DIAMOND REPORT**

January 10, 2026  
IGI Report Number **LG763659170**  
Description **LABORATORY GROWN DIAMOND**  
Shape and Cutting Style **PRINCESS CUT**  
Measurements **5.82 X 5.64 X 4.21 MM**

**GRADING RESULTS**

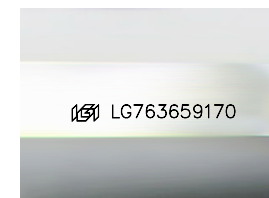
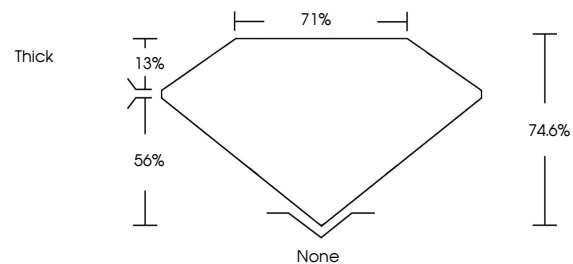
Carat Weight **1.24 CARAT**  
Color Grade **FANCY INTENSE BROWNISH PINK**  
Clarity Grade **VS 2**

**ADDITIONAL GRADING INFORMATION**

Polish **EXCELLENT**  
Symmetry **VERY GOOD**  
Fluorescence **SLIGHT**  
Inscription(s) **IGI LG763659170**

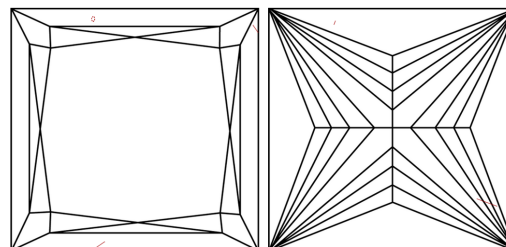
Comments: This Laboratory Grown Diamond was created by Chemical Vapor Deposition (CVD) growth process. Indications of post-growth treatment.

**PROPORTIONS**



Sample Image Used

**CLARITY CHARACTERISTICS**



**KEY TO SYMBOLS**

Red symbols indicate internal characteristics.  
Green symbols indicate external characteristics.

**COLOR**

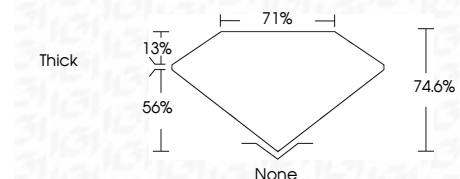
D E F G H I J Faint Very Light Light

**CLARITY**

FL	IF	VS <sup>1-2</sup>	VS <sup>1-2</sup>	SI <sup>1-2</sup>	I <sup>1-3</sup>
Flawless	Internally Flawless	Very Very Slightly Included	Very Slightly Included	Slightly Included	Included



January 10, 2026  
IGI Report Number **LG763659170**  
Description **LABORATORY GROWN DIAMOND**  
Shape and Cutting Style **PRINCESS CUT**  
Measurements **5.82 X 5.64 X 4.21 MM**  
**GRADING RESULTS**  
Carat Weight **1.24 CARAT**  
Color Grade **FANCY INTENSE BROWNISH PINK**  
Clarity Grade **VS 2**



**ADDITIONAL GRADING INFORMATION**

Polish **EXCELLENT**  
Symmetry **VERY GOOD**  
Fluorescence **SLIGHT**  
Inscription(s) **IGI LG763659170**  
Comments: This Laboratory Grown Diamond was created by Chemical Vapor Deposition (CVD) growth process. Indications of post-growth treatment.



January 10, 2026  
IGI Report No LG763659170  
PRINCESS CUT  
1.24 CARAT  
5.82 X 5.64 X 4.21 MM  
FANCY INTENSE BROWNISH PINK  
VS 2  
74.6%  
71%  
None  
None  
EXCELLENT  
VERY GOOD  
SLIGHT  
IGI LG763659170  
Comments: This Laboratory Grown Diamond was created by Chemical Vapor Deposition (CVD) growth process. Indications of post-growth treatment.