



ELECTRONIC COPY

LG763659151
Report verification at igi.org



January 8, 2026
IGI Report Number LG763659151
Description LABORATORY GROWN DIAMOND
Shape and Cutting Style ROUND BRILLIANT
Measurements 6.84 - 6.90 X 4.22 MM
GRADING RESULTS
Carat Weight 1.24 CARAT
Color Grade FANCY DEEP ORANGE
Clarity Grade VS 2
Cut Grade IDEAL

January 8, 2026
IGI Report Number LG763659151
Description LABORATORY GROWN DIAMOND
Shape and Cutting Style ROUND BRILLIANT
Measurements 6.84 - 6.90 X 4.22 MM

GRADING RESULTS

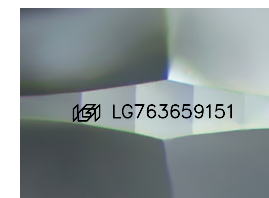
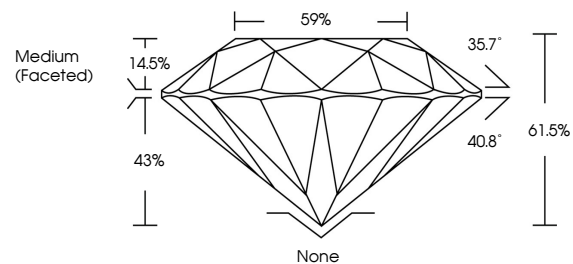
Carat Weight 1.24 CARAT
Color Grade FANCY DEEP ORANGE
Clarity Grade VS 2
Cut Grade IDEAL

ADDITIONAL GRADING INFORMATION

Polish EXCELLENT
Symmetry EXCELLENT
Fluorescence NONE
Inscription(s) IGI LG763659151

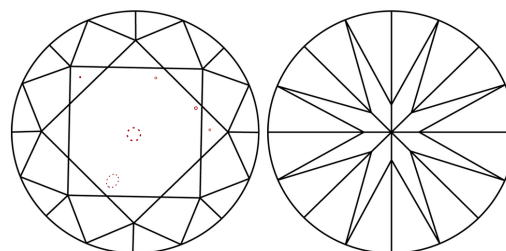
Comments: This Laboratory Grown Diamond was created by Chemical Vapor Deposition (CVD) growth process.
Indications of post-growth treatment.

PROPORTIONS



Sample Image Used

CLARITY CHARACTERISTICS



KEY TO SYMBOLS

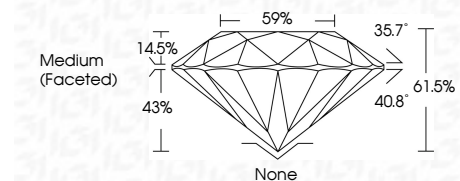
Red symbols indicate internal characteristics.
Green symbols indicate external characteristics.

COLOR

D E F G H I J Faint Very Light Light

CLARITY

FL IF VS 1-2 VS 1-2 SI 1-2 I 1-3
Flawless Internally Flawless Very Very Slightly Included Very Slightly Included Slightly Included Included



ADDITIONAL GRADING INFORMATION

Polish EXCELLENT
Symmetry EXCELLENT
Fluorescence NONE
Inscription(s) IGI LG763659151
Comments: This Laboratory Grown Diamond was created by Chemical Vapor Deposition (CVD) growth process.
Indications of post-growth treatment.



January 8, 2026
IGI Report No LG763659151
ROUND BRILLIANT
6.84 - 6.90 X 4.22 MM
1.24 CARAT
FANCY DEEP ORANGE
VS 2
IDEAL
61.5%
59%
Medium (Faceted)
None
EXCELLENT
EXCELLENT
NONE
None
IGI LG763659151
Comments: This Laboratory Grown Diamond was created by Chemical Vapor Deposition (CVD) growth process.
Indications of post-growth treatment.