



ELECTRONIC COPY

LG763659150
Report verification at igi.org



January 10, 2026

IGI Report Number **LG763659150**

Description **LABORATORY GROWN DIAMOND**

Shape and Cutting Style **ROUND BRILLIANT**

Measurements **6.75 - 6.82 X 4.08 MM**

GRADING RESULTS

Carat Weight **1.16 CARAT**

Color Grade **FANCY DEEP ORANGY
BROWN**

Clarity Grade **VS 1**

Cut Grade **EXCELLENT**

January 10, 2026
IGI Report Number **LG763659150**
Description **LABORATORY GROWN DIAMOND**
Shape and Cutting Style **ROUND BRILLIANT**
Measurements **6.75 - 6.82 X 4.08 MM**

GRADING RESULTS

Carat Weight **1.16 CARAT**

Color Grade **FANCY DEEP ORANGY
BROWN**

Clarity Grade **VS 1**

Cut Grade **EXCELLENT**

ADDITIONAL GRADING INFORMATION

Polish **EXCELLENT**

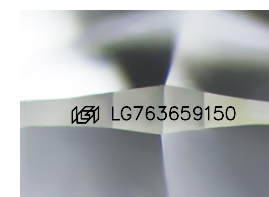
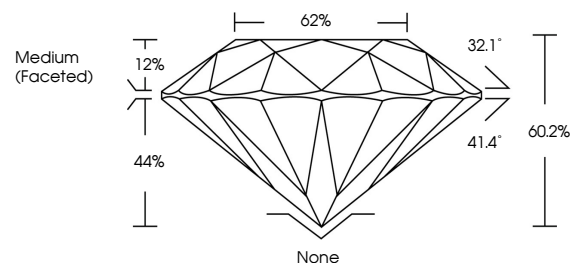
Symmetry **EXCELLENT**

Fluorescence **NONE**

Inscription(s) **IGI LG763659150**

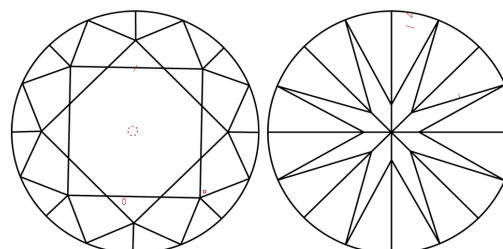
Comments: This Laboratory Grown Diamond was created by Chemical Vapor Deposition (CVD) growth process.
Indications of post-growth treatment.

PROPORTIONS



Sample Image Used

CLARITY CHARACTERISTICS



KEY TO SYMBOLS

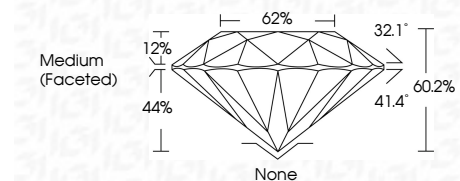
Red symbols indicate internal characteristics.
Green symbols indicate external characteristics.

COLOR

D E F G H I J Faint Very Light Light

CLARITY

FL	IF	VS ¹⁻²	VS ¹⁻²	SI ¹⁻²	I ¹⁻³
Flawless	Internally Flawless	Very Very Slightly Included	Very Slightly Included	Slightly Included	Included



ADDITIONAL GRADING INFORMATION

Polish **EXCELLENT**

Symmetry **EXCELLENT**

Fluorescence **NONE**

Inscription(s) **IGI LG763659150**

Comments: This Laboratory Grown Diamond was created by Chemical Vapor Deposition (CVD) growth process.
Indications of post-growth treatment.



January 10, 2026
IGI Report No LG763659150
ROUND BRILLIANT
6.75 - 6.82 X 4.08 MM
1.16 CARAT
FANCY DEEP ORANGY BROWN
VS 1
EXCELLENT
60.2%
62%
Medium (Faceted)
None
EXCELLENT
EXCELLENT
NONE
NONE
IGI LG763659150
Comments: This Laboratory Grown Diamond was created by Chemical Vapor Deposition (CVD) growth process.
Indications of post-growth treatment.