



**ELECTRONIC COPY**

LG763659145  
Report verification at igi.org



January 10, 2026  
IGI Report Number **LG763659145**  
Description **LABORATORY GROWN DIAMOND**  
Shape and Cutting Style **SQUARE CUSHION MODIFIED BRILLIANT**

Measurements **5.73 X 5.47 X 3.51 MM**

**GRADING RESULTS**

Carat Weight **1.01 CARAT**  
Color Grade **FANCY INTENSE BROWNISH PINK**  
Clarity Grade **VS 2**

January 10, 2026  
IGI Report Number **LG763659145**  
Description **LABORATORY GROWN DIAMOND**  
Shape and Cutting Style **SQUARE CUSHION MODIFIED BRILLIANT**  
Measurements **5.73 X 5.47 X 3.51 MM**

**GRADING RESULTS**

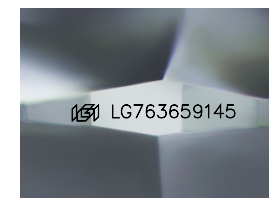
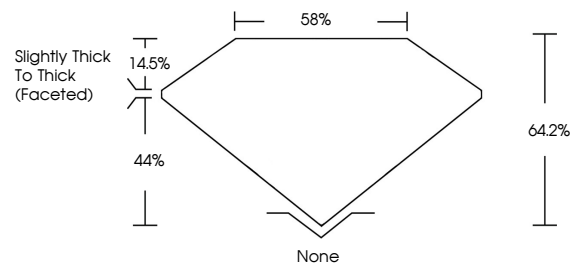
Carat Weight **1.01 CARAT**  
Color Grade **FANCY INTENSE BROWNISH PINK**  
Clarity Grade **VS 2**

**ADDITIONAL GRADING INFORMATION**

Polish **EXCELLENT**  
Symmetry **EXCELLENT**  
Fluorescence **SLIGHT**  
Inscription(s) **IGI LG763659145**

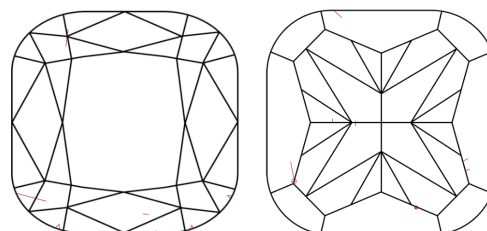
Comments: This Laboratory Grown Diamond was created by Chemical Vapor Deposition (CVD) growth process.  
Indications of post-growth treatment.

**PROPORTIONS**



Sample Image Used

**CLARITY CHARACTERISTICS**



**KEY TO SYMBOLS**

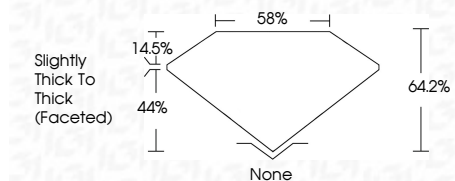
Red symbols indicate internal characteristics.  
Green symbols indicate external characteristics.

**COLOR**

D E F G H I J Faint Very Light Light

**CLARITY**

FL	IF	VS <sup>1-2</sup>	VS <sup>1-2</sup>	SI <sup>1-2</sup>	I <sup>1-3</sup>
Flawless	Internally Flawless	Very Very Slightly Included	Very Slightly Included	Slightly Included	Included



**ADDITIONAL GRADING INFORMATION**

Polish **EXCELLENT**  
Symmetry **EXCELLENT**  
Fluorescence **SLIGHT**  
Inscription(s) **IGI LG763659145**  
Comments: This Laboratory Grown Diamond was created by Chemical Vapor Deposition (CVD) growth process.  
Indications of post-growth treatment.



January 10, 2026  
IGI Report No LG763659145  
SQUARE CUSHION MODIFIED BRILLIANT  
1.01 CARAT  
FANCY INTENSE BROWNISH PINK  
VS 2  
5.73 X 5.47 X 3.51 MM  
64.2%  
44%  
14.5%  
None  
EXCELLENT  
EXCELLENT  
SLIGHT  
IGI LG763659145  
Comments: This Laboratory Grown Diamond was created by Chemical Vapor Deposition (CVD) growth process.  
Indications of post-growth treatment.