



LABORATORY GROWN DIAMOND REPORT

January 19, 2026
 IGI Report Number **LG763659092**
 Description **LABORATORY GROWN DIAMOND**
 Shape and Cutting Style **OVAL BRILLIANT**
 Measurements **8.48 X 5.68 X 3.19 MM**

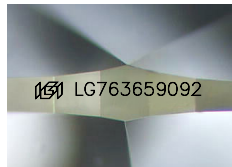
GRADING RESULTS

Carat Weight **0.97 CARAT**
 Color Grade **FANCY INTENSE BROWNISH PINK**
 Clarity Grade **VVS 2**

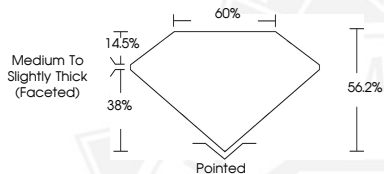
ADDITIONAL GRADING INFORMATION

Polish **EXCELLENT**
 Symmetry **EXCELLENT**
 Fluorescence **SLIGHT**
 Inscription(s) **IGI LG763659092**

Comments: This Laboratory Grown Diamond was created by Chemical Vapor Deposition (CVD) growth process. Indications of post-growth treatment.



Sample Image Used



January 19, 2026
 IGI Report Number **LG763659092**
OVAL BRILLIANT
LABORATORY GROWN DIAMOND
8.48 X 5.68 X 3.19 MM
 Carat Weight **0.97 CARAT**
 Color Grade **FANCY INTENSE BROWNISH PINK**
 Clarity Grade **VVS 2**
 Polish **EXCELLENT**
 Symmetry **EXCELLENT**
 Fluorescence **SLIGHT**
 Inscription(s) **IGI LG763659092**

Comments: This Laboratory Grown Diamond was created by Chemical Vapor Deposition (CVD) growth process. Indications of post-growth treatment.



January 19, 2026
 IGI Report Number **LG763659092**
OVAL BRILLIANT
LABORATORY GROWN DIAMOND
8.48 X 5.68 X 3.19 MM
 Carat Weight **0.97 CARAT**
 Color Grade **FANCY INTENSE BROWNISH PINK**
 Clarity Grade **VVS 2**
 Polish **EXCELLENT**
 Symmetry **EXCELLENT**
 Fluorescence **SLIGHT**
 Inscription(s) **IGI LG763659092**

Comments: This Laboratory Grown Diamond was created by Chemical Vapor Deposition (CVD) growth process. Indications of post-growth treatment.



THIS DOCUMENT WAS PRODUCED WITH THE FOLLOWING SECURITY MEASURES: SPECIAL DOCUMENT PAPER, INK SCREENS, WATERMARK, BACKGROUND DESIGNS, HOLOGRAM AND OTHER SECURITY FEATURES NOT LISTED AND DO EXCEED DOCUMENT SECURITY INDUSTRY GUIDELINES.