



# INTERNATIONAL GEMOLOGICAL INSTITUTE

ELECTRONIC COPY

## LABORATORY GROWN DIAMOND REPORT

January 19, 2026  
 IGI Report Number **LG763659077**  
 Description **LABORATORY GROWN DIAMOND**  
 Shape and Cutting Style **HEART BRILLIANT**  
 Measurements **5.39 X 6.18 X 3.83 MM**

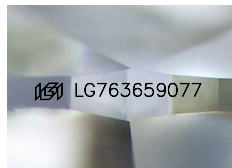
### GRADING RESULTS

Carat Weight **0.76 CARAT**  
 Color Grade **FANCY VIVID PINK**  
 Clarity Grade **SI 2**

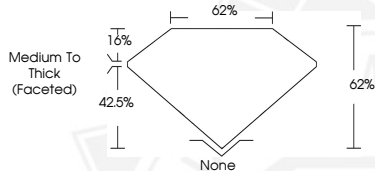
### ADDITIONAL GRADING INFORMATION

Polish **EXCELLENT**  
 Symmetry **EXCELLENT**  
 Fluorescence **SLIGHT**  
 Inscription(s) **IGI LG763659077**

Comments: This Laboratory Grown Diamond was created by  
 Chemical Vapor Deposition (CVD) growth process.  
 Indications of post-growth treatment.



Sample Image Used



January 19, 2026  
 IGI Report Number **LG763659077**  
**HEART BRILLIANT**  
**LABORATORY GROWN DIAMOND**  
**5.39 X 6.18 X 3.83 MM**  
 Carat Weight **0.76 CARAT**  
 Color Grade **FANCY VIVID PINK**  
 Clarity Grade **SI 2**  
 Polish **EXCELLENT**  
 Symmetry **EXCELLENT**  
 Fluorescence **SLIGHT**  
 Inscription(s) **IGI LG763659077**

Comments: This Laboratory Grown  
 Diamond was created by  
 Chemical Vapor Deposition (CVD)  
 growth process. Indications of  
 post-growth treatment.



January 19, 2026  
 IGI Report Number **LG763659077**  
**HEART BRILLIANT**  
**LABORATORY GROWN DIAMOND**  
**5.39 X 6.18 X 3.83 MM**  
 Carat Weight **0.76 CARAT**  
 Color Grade **FANCY VIVID PINK**  
 Clarity Grade **SI 2**  
 Polish **EXCELLENT**  
 Symmetry **EXCELLENT**  
 Fluorescence **SLIGHT**  
 Inscription(s) **IGI LG763659077**

Comments: This Laboratory Grown  
 Diamond was created by  
 Chemical Vapor Deposition (CVD)  
 growth process. Indications of  
 post-growth treatment.



THIS DOCUMENT WAS PRODUCED WITH THE FOLLOWING SECURITY MEASURES: SPECIAL DOCUMENT PAPER, INK SCREENS, WATERMARK, BACKGROUND DESIGNS, HOLOGRAM AND OTHER SECURITY FEATURES NOT LISTED AND DO EXCEED DOCUMENT SECURITY INDUSTRY GUIDELINES.

For terms & conditions and to verify this report, please visit [www.igi.org](http://www.igi.org)