



January 19, 2026

IGI Report Number **LG763659032**

PRINCESS CUT

LABORATORY GROWN DIAMOND

5.08 X 4.95 X 3.29 MM

Carat Weight **0.71 CARAT**

Color Grade **FANCY VIVID PINK**

Clarity Grade **SI 1**

Polish **EXCELLENT**

Symmetry **VERY GOOD**

Fluorescence **STRONG**

Inscription(s) **IGI LG763659032**

Comments: This Laboratory Grown Diamond was created by Chemical Vapor Deposition (CVD) growth process. Indications of post-growth treatment.

LABORATORY GROWN DIAMOND REPORT

January 19, 2026

IGI Report Number

LG763659032

Description

LABORATORY GROWN DIAMOND

Shape and Cutting Style

PRINCESS CUT

Measurements

5.08 X 4.95 X 3.29 MM

GRADING RESULTS

Carat Weight

0.71 CARAT

Color Grade

FANCY VIVID PINK

Clarity Grade

SI 1

ADDITIONAL GRADING INFORMATION

Polish

EXCELLENT

Symmetry

VERY GOOD

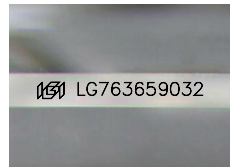
Fluorescence

STRONG

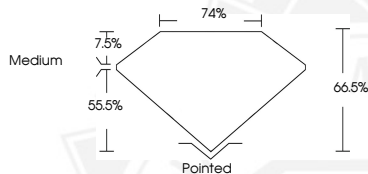
Inscription(s)

IGI LG763659032

Comments: This Laboratory Grown Diamond was created by Chemical Vapor Deposition (CVD) growth process. Indications of post-growth treatment.



Sample Image Used



January 19, 2026

IGI Report Number **LG763659032**

PRINCESS CUT

LABORATORY GROWN DIAMOND

5.08 X 4.95 X 3.29 MM

Carat Weight **0.71 CARAT**

Color Grade **FANCY VIVID PINK**

Clarity Grade **SI 1**

Polish **EXCELLENT**

Symmetry **VERY GOOD**

Fluorescence **STRONG**

Inscription(s) **IGI LG763659032**

Comments: This Laboratory Grown Diamond was created by Chemical Vapor Deposition (CVD) growth process. Indications of post-growth treatment.



THIS DOCUMENT WAS PRODUCED WITH THE FOLLOWING SECURITY MEASURES: SPECIAL DOCUMENT PAPER, INK SCREENS, WATERMARK, BACKGROUND DESIGNS, HOLOGRAM AND OTHER SECURITY FEATURES NOT LISTED AND DO EXCEED DOCUMENT SECURITY INDUSTRY GUIDELINES.