



**INTERNATIONAL
GEMOLOGICAL
INSTITUTE**

ELECTRONIC COPY

LABORATORY GROWN DIAMOND REPORT

January 16, 2026
 IGI Report Number **LG763659028**
 Description **LABORATORY GROWN DIAMOND**
 Shape and Cutting Style **HEXAGONAL MODIFIED STEP CUT**
 Measurements **7.57 X 4.19 X 2.72 MM**

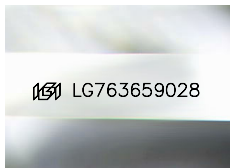
GRADING RESULTS

Carat Weight **0.76 CARAT**
 Color Grade **FANCY INTENSE BROWNISH GREEN**
 Clarity Grade **VS 1**

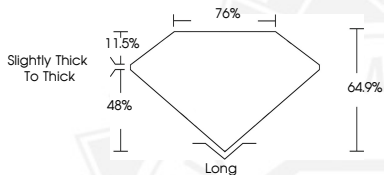
ADDITIONAL GRADING INFORMATION

Polish **VERY GOOD**
 Symmetry **VERY GOOD**
 Fluorescence **VERY SLIGHT**
 Inscription(s) **IGI LG763659028**

Comments: This Laboratory Grown Diamond was created by Chemical Vapor Deposition (CVD) growth process. Indications of post-growth treatment.



Sample Image Used



January 16, 2026

IGI Report Number **LG763659028**
 HEXAGONAL MODIFIED STEP CUT
 LABORATORY GROWN DIAMOND
 7.57 X 4.19 X 2.72 MM

Carat Weight **0.76 CARAT**
 Color Grade **FANCY INTENSE BROWNISH GREEN**
 Clarity Grade **VS 1**
 Polish **VERY GOOD**
 Symmetry **VERY GOOD**
 Fluorescence **VERY SLIGHT**
 Inscription(s) **IGI LG763659028**

Comments: This Laboratory Grown Diamond was created by Chemical Vapor Deposition (CVD) growth process. Indications of post-growth treatment.



January 16, 2026

IGI Report Number **LG763659028**
 HEXAGONAL MODIFIED STEP CUT
 LABORATORY GROWN DIAMOND
 7.57 X 4.19 X 2.72 MM

Carat Weight **0.76 CARAT**
 Color Grade **FANCY INTENSE BROWNISH GREEN**
 Clarity Grade **VS 1**
 Polish **VERY GOOD**
 Symmetry **VERY GOOD**
 Fluorescence **VERY SLIGHT**
 Inscription(s) **IGI LG763659028**

Comments: This Laboratory Grown Diamond was created by Chemical Vapor Deposition (CVD) growth process. Indications of post-growth treatment.

THIS DOCUMENT WAS PRODUCED WITH THE FOLLOWING SECURITY MEASURES: SPECIAL DOCUMENT PAPER, INK SCREENS, WATERMARK, BACKGROUND DESIGNS, HOLOGRAM AND OTHER SECURITY FEATURES NOT LISTED AND DO EXCEED DOCUMENT SECURITY INDUSTRY GUIDELINES.

For terms & conditions and to verify this report, please visit www.igi.org