

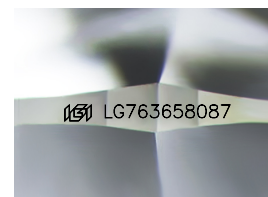
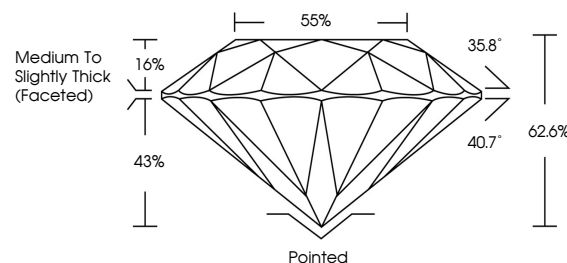


ELECTRONIC COPY

LABORATORY GROWN DIAMOND REPORT

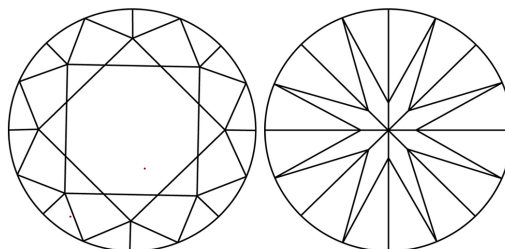
LG763658087
Report verification at igi.org

PROPORTIONS



Sample Image Used

CLARITY CHARACTERISTICS



KEY TO SYMBOLS

Red symbols indicate internal characteristics.
Green symbols indicate external characteristics.

COLOR

D E F G H I J Faint Very Light Light

CLARITY

FL	IF	VVS ¹⁻²	VS ¹⁻²	SI ¹⁻²	I ¹⁻³
Flawless	Internally Flawless	Very Very Slightly Included	Very Slightly Included	Slightly Included	Included



January 8, 2026

IGI Report Number **LG763658087**Description **LABORATORY GROWN DIAMOND**Shape and Cutting Style **ROUND BRILLIANT**

Measurements 7.92 - 7.96 X 4.97 MM

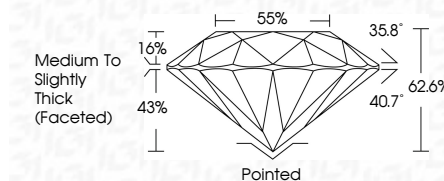
GRADING RESULTS

Carat Weight 1.94 CARAT

Color Grade

Clarity Grade WS 2

Cut Grade **EXCELLENT**



ADDITIONAL GRADING INFORMATION

Polish VERY GOOD

Symmetry **EXCELLENT**Fluorescence **NONE**Inscription(s) LG763658087

Comments: This Laboratory Grown Diamond was created by Chemical Vapor Deposition (CVD) growth process.
Type IIa



© IGI 2020, International Gemological Institute

FD - 10 20

www.igi.org



THIS DOCUMENT WAS PRODUCED WITH THE FOLLOWING SECURITY MEASURES: SPECIAL DOCUMENT PAPER, INK SCREENS, WATERMARK, BACKGROUND DESIGNS, HOLOGRAM AND OTHER SECURITY FEATURES NOT LISTED AND DO EXCEED DOCUMENT SECURITY INDUSTRY GUIDELINE

January 8, 2026
GI Report No LG763658087
ROUND BRILLIANT

92 - 7.96 X 4.97 MM	Carat Weight	1.94 CARAT
	Color Grade	F
	Clarity Grade	VS2
	Cut Grade	EXCELLENT
	Depth	62.6%
	Table	55%
	Girdle	Medium to Slightly Thick (Faceted)
	Culet	Pointed
	Polish	VERY GOOD
	Symmetry	EXCELLENT
	Fluorescence	NONE

Comments:
This Laboratory Grown Diamond was
created by Chemical Vapor Deposition
(CVD) growth process.