

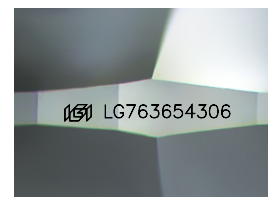
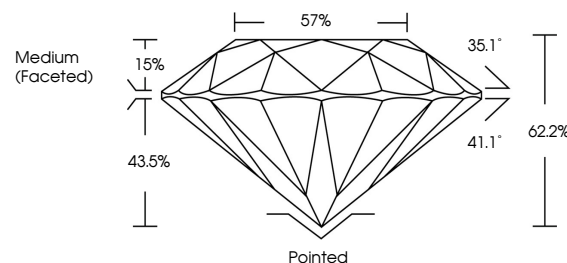


ELECTRONIC COPY

LABORATORY GROWN DIAMOND REPORT

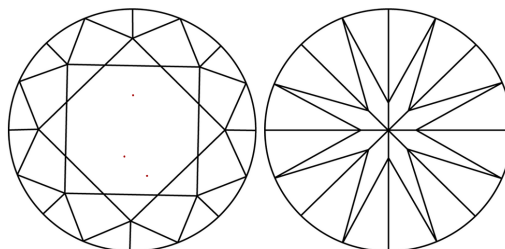
LG763654306
Report verification at [igi.org](https://www.igi.org)

PROPORTIONS



Sample Image Used

CLARITY CHARACTERISTICS



KEY TO SYMBOLS

Red symbols indicate internal characteristics.
Green symbols indicate external characteristics.



www.igi.org

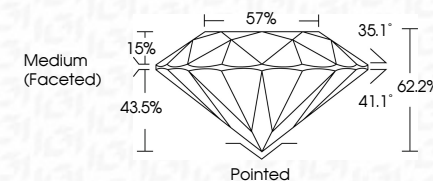
LABORATORY GROWN DIAMOND REPORT



January 6, 2026	
IGI Report Number	LG763654306
Description	LABORATORY GROWN DIAMOND
Shape and Cutting Style	ROUND BRILLIANT
Measurements	8.13 - 8.16 X 5.07 MM

GRADING RESULTS

Carat Weight	2.05 CARATS
Color Grade	D
Clarity Grade	VVS 2
Cut Grade	IDEAL



ADDITIONAL GRADING INFORMATION

Polish	EXCELLENT
Symmetry	EXCELLENT
Fluorescence	NONE
Inscription(s)	163 LG763654306
Comments: HEARTS & ARROWS This Laboratory Grown Diamond was created by Chemical Vapor Deposition (CVD) growth process. Type IIa	



© IGI 2020, International Gemological Institute

FD - 10 20



THIS DOCUMENT WAS PRODUCED WITH THE FOLLOWING SECURITY MEASURES: SPECIAL DOCUMENT PAPER, INK SCREENS, WATERMARK, BACKGROUND DESIGNS, HOLOGRAM AND OTHER SECURITY FEATURES NOT LISTED AND DO EXCEED DOCUMENT SECURITY INDUSTRY GUIDELINES

January 6, 2026
IGI Report No LG763654306
ROUND BRILLIANT

	18.13 - 8.16 X 5.07 MM		2.05 CARATS	
	Carat Weight	D	VVS 2	
	Color Grade		IDEAL	
	Clarity Grade		62.5%	
	Cut Grade		57%	
	Depth		Medium (Faceted)	
	Table			
	Girdle			
	Culet		Pointed	
	Polish		EXCELLENT	
	Symmetry		EXCELLENT	
	Fluorescence		NONE	

Comments:
HEARTS & ARROWS
This Laboratory Grown Diamond was
created by Chemical Vapor Deposition
(CVD) growth process.