



ELECTRONIC COPY

LABORATORY GROWN DIAMOND REPORT

LG763654191
Report verification at igi.org

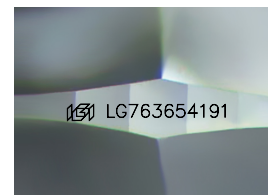
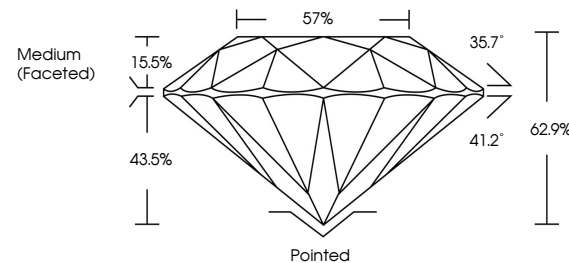
January 9, 2026	
IGI Report Number	LG763654191
Description	LABORATORY GROWN DIAMOND
Shape and Cutting Style	ROUND BRILLIANT
Measurements	7.96 - 8.05 X 5.03 MM
GRADING RESULTS	
Carat Weight	2.00 CARATS
Color Grade	D
Clarity Grade	VS 1
Cut Grade	EXCELLENT

ADDITIONAL GRADING INFORMATION

Polish	EXCELLENT
Symmetry	EXCELLENT
Fluorescence	NONE
Inscription(s)	 LG763654191

Comments: This Laboratory Grown Diamond was created by Chemical Vapor Deposition (CVD) growth process.
Type IIa

PROPORTIONS



Sample Image Used

COLOR

D E F G H I J Faint Very Light Light

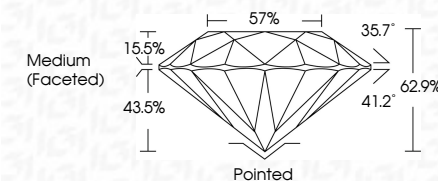
CLARITY

FL	IF	VVS ¹⁻²	VS ¹⁻²	SI ¹⁻²	I ¹⁻³
Flawless	Internally Flawless	Very Very Slightly Included	Very Slightly Included	Slightly Included	Included

LABORATORY GROWN DIAMOND REPORT



January 9, 2026	
IGI Report Number	LG763654191
Description	LABORATORY GROWN DIAMOND
Shape and Cutting Style	ROUND BRILLIANT
Measurements	7.96 - 8.05 X 5.03 MM
GRADING RESULTS	
Carat Weight	2.00 CARATS
Color Grade	D
Clarity Grade	VS 1
Cut Grade	EXCELLENT



ADDITIONAL GRADING INFORMATION

Polish	EXCELLENT
Symmetry	EXCELLENT
Fluorescence	NONE
Inscription(s)	 LG763554191
Comments: This Laboratory Grown Diamond was created by Chemical Vapor Deposition (CVD) growth process.	
Type IIa	



© IGI 2020, International Gemological Institute

FD - 10 20



THIS DOCUMENT WAS PRODUCED WITH THE FOLLOWING SECURITY MEASURES: SPECIAL DOCUMENT PAPER, INK SCREENS, WATERMARK, BACKGROUND DESIGNS, HOLOGRAM AND OTHER SECURITY FEATURES NOT LISTED AND DO EXCEED DOCUMENT SECURITY INDUSTRY GUIDELINES

www.igi.org

