



ELECTRONIC COPY

LABORATORY GROWN DIAMOND REPORT

LG763654088
Report verification at igi.org

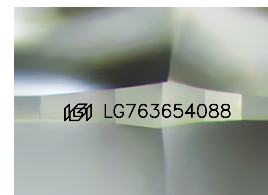
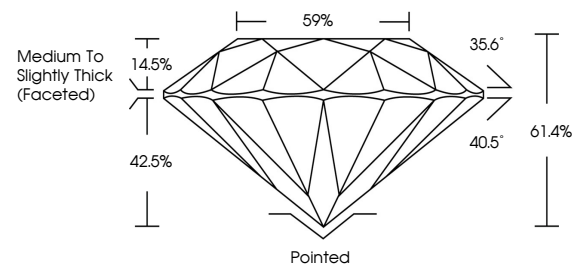
January 12, 2026	
IGI Report Number	LG763654088
Description	LABORATORY GROWN DIAMOND
Shape and Cutting Style	ROUND BRILLIANT
Measurements	8.04 - 8.09 X 4.95 MM
GRADING RESULTS	
Carat Weight	2.02 CARATS
Color Grade	E
Clarity Grade	VVS 2
Cut Grade	IDEAL

ADDITIONAL GRADING INFORMATION

Polish	EXCELLENT
Symmetry	EXCELLENT
Fluorescence	NONE
Inscription(s)	151 LG763654088

Comments: This Laboratory Grown Diamond was created by Chemical Vapor Deposition (CVD) growth process.
Type IIa

PROPORTIONS



Sample Image Used

COLOR

D E F G H I J Faint Very Light Light

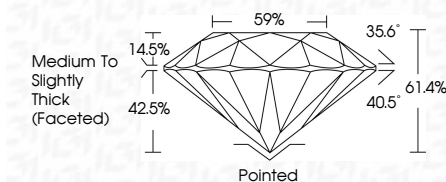
CLARITY

FL	IF	VVS ¹⁻²	VS ¹⁻²	SI ¹⁻²	I ¹⁻³
Flawless	Internally Flawless	Very Very Slightly Included	Very Slightly Included	Slightly Included	Included

LABORATORY GROWN DIAMOND REPORT



January 12, 2026	
IGI Report Number	LG763654088
Description	LABORATORY GROWN DIAMOND
Shape and Cutting Style	ROUND BRILLIANT
Measurements	8.04 - 8.09 X 4.95 MM
GRADING RESULTS	
Carat Weight	2.02 CARATS
Color Grade	E
Clarity Grade	VVS 2
Cut Grade	IDEAL



ADDITIONAL GRADING INFORMATION

Polish	EXCELLENT
Symmetry	EXCELLENT
Fluorescence	NONE
Inscription(s)	 LG7636554088
<p>Comments: This Laboratory Grown Diamond was created by Chemical Vapor Deposition (CVD) growth process.</p> <p>Type IIa</p>	



© IGI 2020, International Gemological Institute

FD - 10 20



THIS DOCUMENT WAS PRODUCED WITH THE FOLLOWING SECURITY MEASURES: SPECIAL DOCUMENT PAPER, INK SCREENS, WATERMARK, BACKGROUND DESIGNS, HOLOGRAM AND OTHER SECURITY FEATURES NOT LISTED AND DO EXCEED DOCUMENT SECURITY INDUSTRY GUIDELINES

www.igi.org

January 12, 2026
 IGI Report No LG76
 ROUND BRILLIANT

8.04 - 8.09 X 4.95 MM

3.04 - 8.09 X 4.96 MM
Carat Weight
2.02 CARATS

Color Grade E

Clarity Grade	WS 2
Out Grade	IDEAL

Cut Grade	IDEAL
Depth	61.4%

Dep III	01.4%
Table	59%

Girdle

	Pointed	Culet
(faceted)		

Quiet	Pointed
Polish	EXCELLENT

Symmetry	EXCELLENT
Fluorescence	NONE

Fluorescence	NONE
Inscription(s)	(S) LG763654088

Comments:

Comments:
This Laboratory Grown Diamond was
created by Chemical Vapor Deposition

created by Chemical Vapor Deposition (CVD) growth process.

Type IIa