



January 12, 2026

IGI Report Number **LG763652767**

**ROUND BRILLIANT
LABORATORY GROWN DIAMOND
4.95 - 5.00 X 2.96 MM**

**0.45 CARAT
FANCY LIGHT PINK
VS 1
EXCELLENT
EXCELLENT
EXCELLENT
SLIGHT
IGI LG763652767**

Comments: This Laboratory Grown Diamond was created by Chemical Vapor Deposition (CVD) growth process. Indications of post-growth treatment.

LABORATORY GROWN DIAMOND REPORT

January 12, 2026
IGI Report Number **LG763652767**
Description **LABORATORY GROWN DIAMOND**
Shape and Cutting Style **ROUND BRILLIANT**
Measurements **4.95 - 5.00 X 2.96 MM**

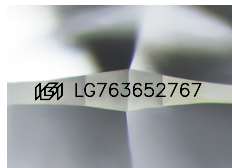
GRADING RESULTS

Carat Weight **0.45 CARAT**
Color Grade **FANCY LIGHT PINK**
Clarity Grade **VS 1**
Cut Grade **EXCELLENT**

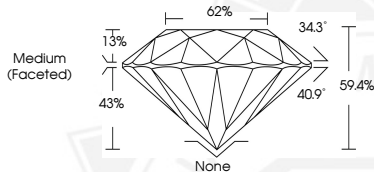
ADDITIONAL GRADING INFORMATION

Polish **EXCELLENT**
Symmetry **EXCELLENT**
Fluorescence **SLIGHT**
Inscription(s) **IGI LG763652767**

Comments: This Laboratory Grown Diamond was created by Chemical Vapor Deposition (CVD) growth process. Indications of post-growth treatment.



Sample Image Used



January 12, 2026

IGI Report Number **LG763652767**

**ROUND BRILLIANT
LABORATORY GROWN DIAMOND
4.95 - 5.00 X 2.96 MM**

**0.45 CARAT
FANCY LIGHT PINK
VS 1
EXCELLENT
EXCELLENT
EXCELLENT
SLIGHT
IGI LG763652767**

Comments: This Laboratory Grown Diamond was created by Chemical Vapor Deposition (CVD) growth process. Indications of post-growth treatment.



THIS DOCUMENT WAS PRODUCED WITH THE FOLLOWING SECURITY MEASURES: SPECIAL DOCUMENT PAPER, INK SCREENS, WATERMARK, BACKGROUND DESIGNS, HOLOGRAM AND OTHER SECURITY FEATURES NOT LISTED AND DO EXCEED DOCUMENT SECURITY INDUSTRY GUIDELINES.