



ELECTRONIC COPY

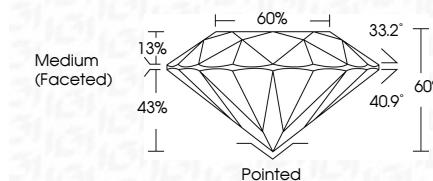
LG763649608
Report verification at igi.org



February 16, 2026
IGI Report Number **LG763649608**
Description **LABORATORY GROWN DIAMOND**
Shape and Cutting Style **ROUND BRILLIANT**
Measurements **8.25 - 8.31 X 4.96 MM**

GRADING RESULTS

Carat Weight **2.09 CARATS**
Color Grade **FANCY YELLOW**
Clarity Grade **VS 1**
Cut Grade **EXCELLENT**

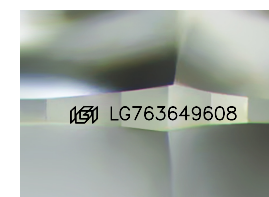


ADDITIONAL GRADING INFORMATION

Polish **EXCELLENT**
Symmetry **EXCELLENT**
Fluorescence **VERY SLIGHT**
Inscription(s) **IGI LG763649608**
Comments: This Laboratory Grown Diamond was created by Chemical Vapor Deposition (CVD) growth process.

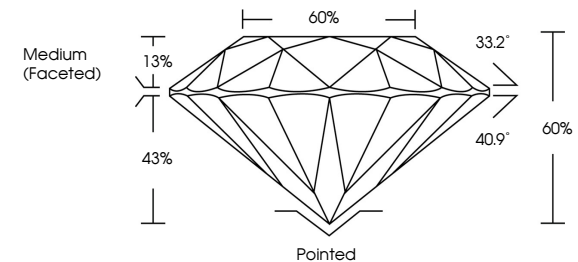


February 16, 2026
IGI Report No **LG763649608**
ROUND BRILLIANT
8.25 - 8.31 X 4.96 MM
Carat Weight **2.09 CARATS**
Color Grade **FANCY YELLOW**
Clarity Grade **VS 1**
Cut Grade **EXCELLENT**
Depth **60%**
Table **60%**
Girdle **Medium (Faceted)**
Culet **Pointed**
Polish **EXCELLENT**
Symmetry **EXCELLENT**
Fluorescence **VERY SLIGHT**
Inscription(s) **IGI LG763649608**
Comments: This Laboratory Grown Diamond was created by Chemical Vapor Deposition (CVD) growth process.

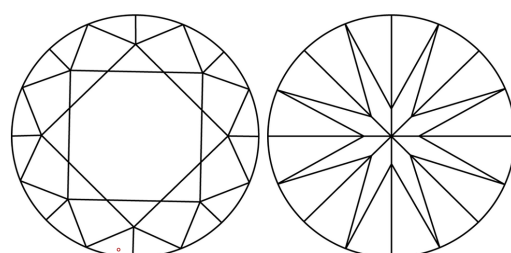


Sample Image Used

PROPORTIONS



CLARITY CHARACTERISTICS



KEY TO SYMBOLS

Red symbols indicate internal characteristics.
Green symbols indicate external characteristics.

COLOR

D	E	F	G	H	I	J	Faint	Very Light	Light
---	---	---	---	---	---	---	-------	------------	-------

CLARITY

FL	IF	VS ¹⁻²	VS ¹⁻²	SI ¹⁻²	I ¹⁻³
Flawless	Internally Flawless	Very Very Slightly Included	Very Slightly Included	Slightly Included	Included

